

Ysgol Gynradd Llandegefvan



2018-2019

Llawlyfr Rhieni

Ysgol Gynradd Llandegefvan



2018-2019

Parents Handbook



GAIR O GROESO

Annwyl Riant/Warcheidwad,

Wrth gyflwyno'r llawlyfr yma "Gwybodaeth i Rieni" fe garem estyn croeso cynnes i'ch plentyn i Ysgol Llandegfan.

Ein gweledigaeth yn Ysgol Llandegfan yw darparu ysgol ble mae'r holl disgyblion, staff, Llywodraethwyr a'r gymuned ehangach yn gweithio gyda'i gilydd i gynnig amgylchedd groesawgar, ysgogol a diogel, er mwyn annog dysgu effeithiol. Amcanwn at fagu ymdeimlad o falchder yn y plentyn, yr ysgol a'r gymuned.

Caiff pob unigolyn o fewn cymuned yr ysgol ei werthfawrogi a'i barchu a rhoddwn fri a phwyslais arbennig ar ddathlu llwyddiannau. Ceisiwn wireddu hyn trwy ddarparu Cwricwlwm amrywiol, cytbwys a chyfoethog gyda digon o brofiadau dysgu diddorol, amrywiol ac adnoddau cyfredol a chyfoethog i ysgogi chwilfrydedd naturiol ym mhob plentyn, waeth beth fo'i allu, hil neu ryw. Yn ei dro bydd hyn yn paratoi'r disgyblion ar gyfer eu dyfodol fel dinasyddion lleol a byd eang. Gosodir gwreiddiau cadarn yn eu milltir sgwâr, a'u Cymreictod, teyrngarwch tuag at y gymuned leol a'u hetifeddiaeth tra ar yr un pryd yn datblygu parch at gred a diwylliannau eraill.

Rwyf eisiau i blant Ysgol Llandegfan adael yr ysgol yn ddisgyblion hyderus, yn mwynhau dysgu, wedi'u harfogi gyda sgiliau i fod yn ddysgwyr gydol oes, yn barod i wynebu sialensau a dysgu'n an-nibynol, yn gallu cyd-weithio ac yn gallu cymhwyso sgiliau ymchwilio amrywiol i wahanol sefyllfa-oedd.

Mae'r plant, eu haddysg, eu lles, a'u gallu i gyfrannu tuag at benderfyniadau yn ymwneud â'r ysgol yn flaenoriaeth yn Ysgol Llandegfan. Mae cyfranogiad gweithredol y plant yn eu dysgu ar hyn a ddysgir yn hanfodol a'u hawgrymiadau yn llywio newid i amgylchedd yr ysgol.

Mae'r ysgol a'r cartref yn bartneriaeth. Hoffwn i chi fel rhieni a gwarchodwyr fod yn falch o'r ysgol. Credaf y dylai'r ysgol roi'r cyfle i chi ddeall a bod yn rhan o'r broses addysgu fel y gallwch helpu eich plant y tu allan i'r ysgol.

Rwyf yn hollol argyhoeddedig fod y disgyblion yn haeddu'r cyfleoedd addysgol gorau y gallwn eu darparu ar eu cyfer.

Edrychaf ymlaen i gydweithio gyda chi, er mwyn sicrhau darpariaeth addysgol o'r ansawdd orau Rwyf yn hollol argyhoeddedig fod y disgyblion yn haeddu'r cyfleoedd addysgol gorau y gallwn i'ch plentyn. Anelwn at yr uchel fannau gyda'n gilydd,- "Quaerite Apices!" gan weld a dathlu ein holl 'blant yn tyfu'.

Er hynny nid oes modd cynnwys yr holl wybodaeth am yr ysgol yma ac fe nodir y gall rhai manylion newid rhwng amser cyhoeddi'r llawlyfr a dechrau'r flwyddyn ysgol. Fe'ch gwahoddir i drafod ei gynnwys (neu unrhyw beth nad ydyw wedi ei gynnwys) gyda mi trwy wneud trefniadau i ymweld â'r ysgol.

Yn gywir iawn,

Mr D. Hood
Pennaeth



A WORD OF WELCOME

Dear Parent/Guardian,

In presenting this "Information for Parents" handbook, we extend a warm welcome to your child to Ysgol Llandegfan

Our vision at Ysgol Llandegfan is to provide a school where all pupils, staff, Governors and the wider community collaborate so as to create a welcoming, stimulating and safe environment, so as to encourage effective learning. The aim is to nurture a sense of pride in the child, the school and the community.

Every individual within the school community is appreciated and respected and we place a special pride of place and emphasis on celebrating achievements. We try and achieve this through providing a diverse, well-balanced and enriching Curriculum that provides plenty of engaging, diverse learning experiences and current and enriching resources to spur a natural curiosity in every child, irrespective of ability, race or gender. This, in turn, will equip the pupils for their future as local and global citizens. Firm roots are laid in their immediate environs, and their sense of Welshness, loyalty towards the local community and their heritage whilst at the same time developing respect towards other faiths and cultures.

My goal is to see the children of Ysgol Llandegfan leaving the school as confident pupils, who enjoy learning, equipped with skills to be lifelong learners, ready to face challenges and learn independently, able to collaborate and equip various investigative skills in various situations.

The children, their education, their well-being and their ability to contribute towards school related decisions is a priority at Ysgol Llandegfan. The children's active participation in their learning and what is taught is crucial and their suggestions steer a change in the school's environment. The school and the home is a partnership. My goal is that parents and guardians take pride in the school. I believe that the school should provide an opportunity for you to understand and participate in the teaching process so that you can assist your children beyond the school premises.

I am wholly persuaded that the pupils merit the best educational opportunities that we can provide for them.

I look forward to working with you to help ensure the highest standard of education for your child. We aim to 'Reach For The Sky' - (Quaerite Apices!) - so as to be able to see all of our 'Children Growing', and to celebrate each child's successes.

However, it is not possible here to include all the information about the school, and please note that certain details may be amended between the time of publication of the handbook and the start of the school year. You are invited to discuss its contents (or anything not included) with me through making arrangements to visit the school.

Yours sincerely,

Mr D Hood
Headteacher



Llawlyfr 2018-19

Ysgol Llandegfan

ENW A CHYFEIRIAD YR YSGOL:

**YSGOL LLANDEGFAN
LLANDEGFAN
YNYS MON
LL59 5UW**

RHIF FFÔN

01248 713431

E-bost:

pennaeth.llandegfan@ynysmon.gov.uk

SAFWE YSGOL:

www.ysgolllandegfan.org

PENNAETH:

MR D. Hood

CADEIRYDD Y

LLYWODRAETHWYR :

CYNG. CARWYN JONES

DISGRIFIAD O'R YSGOL

Ysgol Gynradd Sirol (Babanod ac lau) yw'r ysgol hon.
Mae'n ysgol ddyddiol, ddwyieithog, gyd-addysgol.

Ein bwriad yn Ysgol Llandegfan yw creu ysgol hapus, lle mae pawb yn gwneud eu gorau bob amser, yn mwynhau, yn frwdfrydig, yn gofalu am ei gilydd ac yn cael pleser o ddysgu.





Handbook 2018-19

Ysgol Llandegfan

NAME AND ADDRESS OF SCHOOL:

**YSGOL LLANDEGFAN
LLANDEGFAN
YNYS MON
LL59 5UW**

TELEPHONE NUMBER

01248 713431

E-MAIL:

pennaeth.llandegfan@ynysmon.gov.uk

SCHOOL WEBSITE:

www.ysgolllandegfan.org

HEADTEACHER:

MR D. Hood

CHAIR OF GOVERNORS : **COUN.CARWYN JONES**

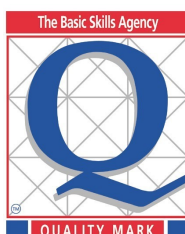
DESCRIPTION OF THE SCHOOL

This is a County Primary School (Infants and Juniors).
It is a day, bilingual, co-educational school.

Our intention at Ysgol Llandegfan is to create a happy school, where everyone does their best at all times, where they enjoy themselves, are enthusiastic, take care of each other and derive pleasure from learning.



Ysgolion Iach Gwynedd



GARDDIO BYWYD GWYLLT
GOGLEDD CYMRU



WILDLIFE GARDENING
NORTH WALES

YMUNWCH Â'R MUDIAD

sustrans

JOIN THE MOVEMENT





Mae Ysgol Llandegfan yn gwasanaethu pentref Llandegfan a'r cylch gwledig cyfagos. Ceir disgyblion hefyd sydd yn teithio o'r tu allan i ddalgylch naturiol yr ysgol.

Mae'r ysgol yn gwasanaethu cymuned eang ag iddi amrywiaeth ieithyddol a chymdeithasol. Gwneir y gorau bob amser i sicrhau bod pob disgybl yn teimlo'n rhan o deulu'r ysgol.



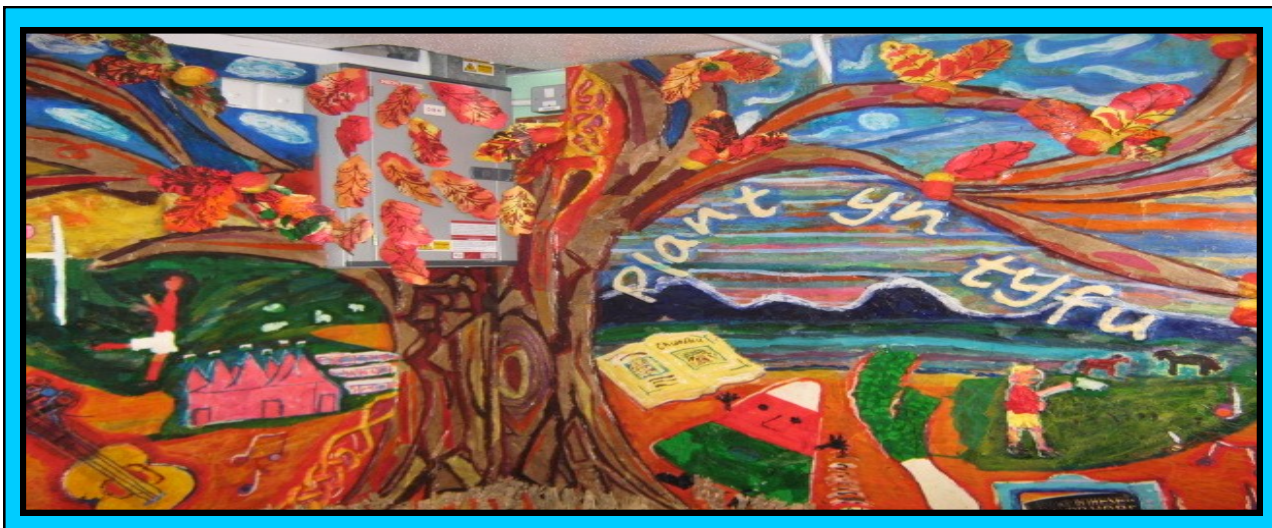
Agorwyd yr ysgol bresennol yn 1972 ac oddi yma gwelir golygfeydd godidog o fynyddoedd Eryri, ond mae addysg wedi ei ddarparu yn y pentref ers canrif a mwy yn yr Hen Ysgol sydd wedi ei lleoli rhyw ddau gan metr o'r ysgol bresennol.

Dyma'r unig adeilad ysgol o'i math ym Mhrydain, ac enillwyd gwobrau oherwydd y bensaerniaeth. Ceir cyfleoedd addysgu gwahanol oherwydd lefelau amrywiol yr adeilad. Bellach mae yma estyniad newydd sy'n cartrefu plant Cyfnod Sylfaen yr ysgol, Y Mudiad Ysgolion Meithrin, Y Cylch Chwarae a'r Clwb Plant ar ôl ysgol. Ceir defnydd eang o'r caeau chwarae sy'n addas i nifer o wahanol chwaraeon—yn ogystal â chorneli i arddio a hybu bywyd gwylt, sy'n rhan annatod o ethos yr ysgol, ac sydd hefyd yn ysgol iach ac yn ysgol werdd. Gwnaiff y gymuned ehangach hefyd ddefnydd o dir yr ysgol.

Ymfalchiwn yn y ffaith bod rhieni ac ymwelwyr â'r ysgol yn cydnabod yr ymdeimlad o gyfeillgarwch a threfn sy'n bodoli yma, a'r modd y bydd disgyblion newydd yn ymgartrefu'n hapus.

Ceir awyrgylch symbylus a gweithgar yn y dosbarthiadau yn seiliedig ar gyberthynas o barch a gofal. Mae hyn yn galluogi'r disgyblion i ddatblygu hunan hyder ag agwedd bositif at ddysgu. Disgwylir safon uchel o ymddygiad ac ymroddiad ar bob achlysur. Ceir ymdeimlad da o gydweithio ac anogir pob disgybl i dderbyn a rhannu cyfrifoldebau amrywiol.

Mae yma berthynas iach ac agored rhwng pobl o wahanol gefndiroedd. Rhoddir parch i'r Gymraeg a'r Saesneg fel ei gilydd yn ein chwarae ac yn ein gwaith. Dros y blynyddoedd, integreiddiwyd disgyblion yma yn llwyddiannus o wahanol gefndiroedd ieithyddol led led y byd. Rydym yn hyrwyddo ein harwyddair i'r eithaf i sicrhau 'Plant yn tyfu'





Ysgol Llandegfan serves the village of Llandegfan and the neighbouring rural area. Pupils also travel from outside the school's natural catchment-area.

The school serves a widely spread linguistically and socially diverse community. No effort is spared to ensure that every pupil feels part of the school family

The current school building was opened in 1972 and commands magnificent views of Snowdonia, but education has been provided in the village for over a century in the Old School which is located about 200 meters up the road from the current school.



It is the only school building of its design in the U.K. and has won prizes on account of its architecture. Its semi open-plan design and varying levels offer stimulating teaching opportunities. In 2006 a new extension was completed with two new classrooms as well as a room for the local nursery schools and Kids Club. The school benefits from extensive playing fields that are suitable for many sporting activities and which are an important asset to the community. The school has its own wildlife, vegetable and fruit gardens which greatly contribute to the green and healthy schools' ethos.

We take pride in that parents and visitors recognize the sense of friendship and order at the school, and how new pupils happily settle down.

There is a motivating and hard-working ethos in the classes, based on mutual respect and care. This enables pupils to develop self-esteem and a positive attitude towards learning. A high standard of behaviour and commitment is expected at all times. There is a good sense of collaboration and every pupil is encouraged to accept and share diverse responsibilities.

At Ysgol Gynradd Llandegfan we have an open and healthy relationship between pupils from wide-ranging home backgrounds. Respect is shown towards Welsh first-language pupils and English first-language pupils alike, both at work and at play. Over the years pupils from many other worldwide language backgrounds have been successfully integrated into our school life. We promote our school motto to its utmost 'Plant yn tyfu'





NODAU AC AMCANION

NODAU

1. Creu amgylchfyd ac awyrgylch lle gall y disgybl dyfu, datblygu ac aeddfedu i ddod yn unigolyn hyderus, yn ymwybodol o les eraill, ac yn aelod cyfrifol o'r gymdeithas.
2. Cynnig addysg o'r ansawdd uchaf posibl sydd yn adlewyrchu gofynion yr Awdurdod, y gymdeithas a'r unigolyn.
3. Galluogi pob disgybl i ddatblygu i fod yn rhugl yn y Gymraeg a'r Saesneg fel y gallent gymryd rhan lawn ym mywyd cymdeithasol a diwylliannol y gymdeithas ddwyieithog.

AMCANION

1. Galluogi pob plentyn i ddatblygu ei botensial yn llawn drwy ennill sgiliau, gwybodaeth, dealltwriaeth ac agweddau, gan gynnwys sgiliau personol, cymdeithasol ac emosiynol, i'w alluogi i ddod yn ddinesydd dwyieithog sy'n weithredol yn economaidd, yn gymdeithasol ac yn bersonol, ac yn ddysgwr gydol oes.
2. Galluogi pob plentyn i fod yn ddwyieithog
3. Cynnig i blant gwricwlwm cynhwysol sy'n eu hysgogi i ddysgu ac i wireddu eu Potensial
4. Sefydlu cymuned ddysgu broffesiynol cadarn lle gall ymarferwyr ddatblygu a rhannu gwybodaeth broffesiynol am ddysgu ac addysgu
5. Hyrwyddo diwylliant o gynhwysiant cymdeithasol a pharch at amrywiaeth, yn arbennig drwy ddatblygu lles plant a theilwra'r dysgu i'r unigolyn.
6. Darparu cymuned ddysgu ar gyfer pawb sy'n gysylltiedig â bywyd ysgol, yn cynnwys plant a'u teuluoedd, llywodraethwyr, athrawon, staff arall yn yr ysgol ac oedolion sy'n hyfforddi i weithio yn yr ysgol.
7. Bod yn chwaraewr allweddol gyda darparwyr gwasanaethau eraill wrth gynllunio a chyflwyno gwasanaethau gwell i'r plant er mwyn gwella'u lles.





AIMS AND OBJECTIVES

AIMS

1. To create an environment where the pupils can grow, develop and mature to be a confident individual, aware of the welfare of others, and a responsible member of society.
2. To offer education of the highest quality which reflects the requirements of the Authority, the community and the individual
3. To enable each pupil to develop fluency in Welsh and English, so that they may participate fully in the social and cultural life of the bilingual community

OBJECTIVES

1. Enable every child to fully achieve his potential through acquiring skills, information, understanding and aspects, including personal, social and emotional, to enable him to become a bilingual citizen who is economically, socially and personally active, and a life-long learner.
2. Enable each child to be bi-lingual
3. Provide a wide and inclusive curriculum for children that motivates them to learn and achieve their potential.
4. Promote a culture of social inclusion and respect towards diversity, especially through developing children's well-being and tailoring learning for the individual.
5. Establish a robust professional learning community that enables practitioners to develop and share professional knowledge of learning and teaching
6. Provide a learning community for all associated with school life, including children and their families, governors, teachers, other school staff, and adults receiving training to work at the school.
7. Be a key player with other service providers when planning and introducing better services for children so as to improve their well-being.





POLISI MYNEDIAD

Derbynnir disgyblion i'r ysgol yn unol â Pholisi Mynediad yr Awdurdod. Gellir gweld copi trwy gyrchu i wefan Cyngor Ynys Môn. Yn unol â'r polisi hwnnw, derbynnir disgyblion oed Derbyn i'r ysgol yn llawn amser yn y Medi yn dilyn eu pen-blwydd yn 4 oed.

Croeso i chi gysylltu â'r Pennaeth i drafod a threfnu ymweliad cyn gwneud cais i'r Awdurdod.

Yn ystod tymor yr Haf, gwahoddir rhieni disgyblion newydd i'r ysgol i siarad â'r Pennaeth ac athrawes y Dosbarth Derbyn, er mwyn rhannu gwybodaeth am drefniadaeth Y Cyfnod Sylfaen. Tua diwedd y tymor gwahoddir y plant i'r ysgol am gyfnod byr er mwyn iddynt ymgyfarwyddo â'u hamgylchedd newydd. Teimlwn fod hyn yn lleihau eu gofid ac yn eu helpu i edrych ymlaen at ddechrau eu gyrfa yn yr ysgol.

Yn yr un modd, dilynnir Polisi Mynediad yr Awdurdod i drosglwyddo disgyblion hŷn o un ysgol i'r llall. Mae'n arferol i ddisgyblion sy'n trosglwyddo i Gyfnod Allweddol 2 a hynny heb eu bod yn medru'r Gymraeg i fynychu'r Uned Iaith ym Moelfre am dymor.

Trosglwyddo i'r Uwchradd - Mae disgyblion yn gadael i fynychu'r ysgol uwchradd ar ôl Blwyddyn 6. Mae disgyblion sy'n byw o fewn y dalgylch, fel rheol, yn mynychu Ysgol David Hughes. Mae staff o'r ysgol uwchradd yn ymweld yn ystod tymor yr Haf cyn i'r disgyblion drosglwyddo ym mis Medi a mae trefniadau i'r disgyblion i fynychu am 'ddyddiau llawn' yr ysgol uwchradd o'u dewis.

Dalier sylw mai'r Awdurdod Lleol sydd yn gyfrifol am fynediadau i Ysgolion yr Awdurdod.

POLISI IAITH

AMCANION CYFFREDINOL

Mae Awdurdod Addysg Môn yn gweithredu polisi ddwyieithog drwy'r holl ysgolion a hefyd yn datblygu polisi dwyieithog ar gyfer sefydliadau eraill.

Yr amcan yw datblygu gallu disgyblion a myfyrwyr y sir i fod yn hyderus ddwyieithog, er mwyn eu galluogi i fod yn aelodau cyflawn o'r gymdeithas ddwyieithog y maent yn rhan ohoni.

Dylai holl sefydliadau addysg y sir adlewyrchu ac atgyfnerthu'r polisi iaith yn eu gweinyddiad, eu bywyd cymdeithasol a'u trefn fugeiliol, yn ogystal ag yn eu darpariaeth academaidd.

AMCANION PENODOL

Dosbarth Derbyn / Cyfnod Sylfaen

Sicrhau, trwy ddarpariaeth a threfniadaeth feithrin bwrpasol a sensitif, y rhoddir i bob plentyn sylfaen gadarn yn y Gymraeg, er mwyn eu galluogi i gyrraedd y nod o ddwyieithrwydd llawn maes o law.

Adeiladu ar y sylfeini a osodwyd i'r Gymraeg drwy addysg Y Cyfnod Sylfaen. Cadarnhau a datblygu mamiaith y plentyn o ddysgwr Cymraeg ac ymestyn gafael y plentyn o gartref Cymraeg ar y Saesneg.

Adran Iau/Cyfnod Allweddol 2

Cadarnhau a datblygu Cymraeg a Saesneg pob plentyn yn eu holl agweddau goddefol a gweithredol, er mwyn sicrhau ei fod yn gallu siarad, darllen ac ysgrifennu'n rhwydd ac yn hyderus yn y ddwy iaith pan fo'n trosglwyddo i'r ysgol uwchradd. (Gwneir darpariaeth arbennig ar gyfer hwyrdyffodiaid iau).

Siarter Iaith Gymraeg Ysgolion Ynys Môn

Rydym yn cydweithio gyda Chyngor Ynys Môn i hybu defnydd addysgol a chymdeithasol o'r iaith Gymraeg. Hanfod y siarter ydi annog a gwobrwo'r ysgolion sy'n llwyddo i greu agwedd bositif tuag at yr iaith a chynyddu defnydd o'r Gymraeg ymysg y plant. Mae'n bwysig bod pobl ifanc Ynys Môn yn gallu dysgu, byw a gweithio trwy ba bynnag iaith a ddewisant, a bod ganddyn nhw'r sgiliau ieithyddol i fanteisio'n llawn ar y bywyd addysgol, cymdeithasol ac economaidd sydd gan Ynys Môn i'w gynnig





ADMISSIONS POLICY

Pupils are admitted to the school in compliance with the Authority's Admissions Policy. In compliance with that policy, Reception class pupils are admitted full-time to school in the September following their 4th birthday. Feel free to contact the Headteacher to discuss and arrange a visit.

During the Summer term, parents are invited to the school to speak to the Headteacher and Reception Class teacher, in order to share information about the day to day running of the school and the Foundation Phase. Towards the end of the term the children are invited to attend the school for half a day to get used to the class in preparation for September.

We feel that this helps the children settle and helps them prepare for the beginning of their time in school.

Also, the Authority's Admission Policy is followed when children transfer from one school to another. It is usual for pupils who transfer to Key Stage 2 without the ability to speak Welsh to attend the Welsh Language Unit in Moelfre for a term.

Children leave for the secondary schools at the end of Year 6. Those residing within the school's catchment area are able to attend Ysgol David Hughes.

Staff from secondary schools visit during the summer term prior to the children's transfer in September and arrangements are made for 'whole day' visits by the children to the secondary school of their choice.

Please note that the Local Authority is solely responsible for all admissions to maintained schools in Anglesey.

LANGUAGE POLICY

GENERAL AIMS

Ynys Môn Education Authority operates a bilingual policy in all its schools and is also developing a bilingual policy for the Further Education establishments within the county.

The aim is to develop the ability of pupils and students within the county to be confidently bilingual in order that they can be full members of the bilingual society of which they are a part.

All educational establishments within the county should reflect and reinforce the language policy in their administration, their social life and pastoral arrangements as well as academic provision.

SPECIFIC AIMS

Reception Class / Foundation Stage

To ensure, through sensitively structured provision and organisation, that each child receives a firm foundation in Welsh in order to enable him / her in due course to attain the aim of full bilingualism.

To build on the Welsh language foundations laid through Nursery Education; to consolidate and develop the mother tongue of children who are Welsh learners; to extend the competence in English of children from Welsh speaking homes.

KS2

To consolidate each child's capabilities in Welsh and English, both active and receptive so as to progressively develop his/her skills in speaking, reading and writing fluently and confidently in both languages. Special provision will be made for Junior late-comers)

Anglesey Schools' Welsh Language Charter

We are collaborating with Anglesey Council to promote educational and social use of the Welsh language. The purpose of the charter in essence is to encourage and reward the schools that succeed in generating a positive attitude towards the language and increase the use of Welsh amongst children. It is important that the young people of Anglesey are able to learn, work and live through the medium of whichever language they choose, and that they have the linguistic skills to take full advantage of the academic, social and economic life that Anglesey has to offer.





Cwricwlwm

Rhagair

Pwrpas cyfundrefn addysg yw creu sefyllfaoedd a chyflenwi adnoddau fydd yn galluogi pob plentyn dyfu yn bersonoliaeth lawn, datblygu ac ymarfer ei holl ddoniau, fydd yn darparu ar ei gyfer yn ôl oedran, gallu a diddordeb, ac yn ei gymhwyso i fod yn aelod cyfrifol o gymdeithas ddwyieithog, yn aelod fydd yn gallu cyfrannu iddi a derbyn oddi wrthi, a byw mewn heddwch a brawdgarwch gyda'i gyd-ddyn.

Mae i'r datganiad cyffredinol hwn dair agwedd gyd-berthnasol:

- a) galluogi pob plentyn i ddatblygu i'w lawn botensial
- b) sicrhau bod pob plentyn yn cael ei gyflwyno i'r etifeddiaeth Gymreig
- c) rhoi cyfle i bob plentyn ddatblygu fel aelod llawn o gymdeithas sy'n prysur newid.

Amcanion Cyffredinol

1. Datblygu sgiliau llafaredd, llythrennedd a rhifedd yng nghyd-destun symbylu chwilfrydedd, dychymyg a diddordeb plentyn.
2. Cynyddu gwybodaeth y plentyn a datblygu ei allu i resymu er mwyn ei gynorthwyo i addasu i fyd sy'n cyflym newid ac yn mynd yn fwy soffistigedig yn ei brosesau a'i dechnegau, yn arbennig mewn perthynas â thechnoleg hysbysiaeth.
3. Creu ym mhob plentyn yr awydd i geisio am fwy o wybodaeth a phrofiadau yn ystod ei fywyd a datblygu ei feddwl a'i synnwyr moesol ac ysbrydol.
4. Cynorthwyo'r plentyn fedru byw a gweithio gydag eraill a datblygu agweddau fydd yn ei alluogi i fod yn aelod cyfrifol o gymdeithas.
5. Datblygu yn y plentyn sensitifrwydd, gwerthfawrogiad esthetig a sgiliau hamdden.
6. Rhoi sylw arbennig i bob plentyn sydd ag anghenion arbennig, e.e. rhai eithriadol o alluog a rhai sydd dan anfanteision amrywiol.
7. Cyflwyno syniadau a chysyniadau a hynny trwy ddulliau bywiog a deinamig sy'n hawlio ymateb y disgybl.

Mae'n ofynnol i bob ysgol baratoi a datblygu cynllun cynhwysfawr, yn seiliedig ar ddogfen yr Awdurdod Addysg ac yn unol â gofynion y Cwricwlwm Cenedlaethol. Mae'r cynllun hwn yn cynnwys manylion am y cwrs addysg a'r modd mae'n cael ei weithredu er mwyn sicrhau bod yr addysg a gyfrennir i'r disgyblion yn cyfarfod yn llawn a'r amcanion sydd yn y ddogfen.



Curriculum

Preface

The purpose of an education system is to create situations and provide resources that will enable all children to become rounded personalities, develop and exercise all of their talents, and to provide for them according to age, ability and interest and equip them to become responsible members of a bilingual community, and be able to make a contribution to that community and benefit from it and live in peace and harmony with their fellow-man.

This general statement contains three inter-related aspects:

- a) enable every child to develop to his/her full potential
- b) ensure that every child is introduced to the Welsh heritage
- c) provide an opportunity for every child to develop as a full member of a rapidly-changing society.

General Objectives

1. To develop oracy, literacy and numeracy skills within the context of inspiring the child's enthusiasm, imagination and interest.
2. To increase the child's knowledge and to develop his/her powers of reasoning in order to assist the child to adapt to a rapidly-changing world with increasingly sophisticated processes and technologies, particularly in relation to information technology.
3. To instil in each child the desire to seek further knowledge and experience during his/her life and to develop his/her intellect and moral and spiritual awareness.
4. To assist the child to live and work with others and to develop attitudes that will enable him/her to become a responsible member of the community.
5. To develop the child's sensitivity, aesthetic appreciation and leisure skills.
6. To provide particular attention to every child with special needs, e.g. the exceptionally able and those with various disadvantages.
7. To introduce ideas and concepts by employing lively and dynamic methods that will motivate pupils' response.

Every school is required to develop a comprehensive plan, based on the Education Authority's document and in accordance with the requirements of the National Curriculum. This plan includes details of the curriculum and the way in which it is implemented in order to ensure that the education provided to pupils meets fully with the objectives contained in the document.



Y CWRICWLWM

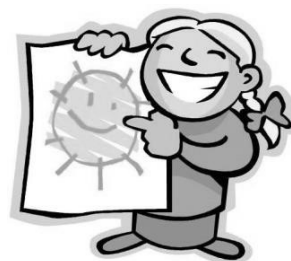
Yn unol â gofynion Deddf Addysg 1988, mae'r Awdurdod Addysg wedi llunio, ac yn bwriadu adolygu'n rheolaidd, ddatganiad ysgrifenedig o'i bolisi mewn perthynas a'r cwricwlwm seciwlar. Dehonglir gofynion y Cwricwlwm Cenedlaethol yng nghyd-destun athroniaeth a pholisïau presennol yr Awdurdod.

Y Cyfnod Sylfaen

Plant Derbyn, B1 a B2

Mae cwricwlwm y Cyfnod Sylfaen yn adeiladu ar y Canlyniadau Dymunol presennol i Ddysgu Plant Cyn Oedran Addysg Orfodol, ac yn cynnwys agweddau ar y canllawiau ar gyfer Cyfnod Allweddol 1. Mae'r cwricwlwm yn cael ei ddatblygu o dan y saith Maes Dysgu -

1. Datblygiad Personol a Chymdeithasol, Lles ac Amrywiaeth Ddiwylliannol
2. Sgiliau Iaith, Llythrennedd a Chyfathrebu
3. Datblygu'r Gymraeg
4. Datblygiad Mathemategol
5. Gwybodaeth a Dealltwriaeth o'r Byd
6. Datblygiad Corfforol
7. Datblygiad Creadigol



Mae'r Cyfnod Sylfaen yn gosod pwyslais mawr ar ddatblygu'r plant mewn

- sgiliau a dealltwriaeth,
- lles personol, cymdeithasol, emosiynol, corfforol a deallusol er mwyn datblygu'r plentyn cyfan
- agweddau cadarnhaol at ddysgu fel y bydd y plant yn mwynhau ac am barhau a'u haddysg am gyfnod hirach
- hunan-barch a hunan-hyder i arbrofi, ymchwilio, dysgu pethau newydd a ffurfio perthynas newydd ag eraill
- arsylwi a sgiliau mynegiannol a chreadigol i annog eu datblygiad fel unigolion, gyda ffyrdd gwahanol o ymateb i brofiadau
- gweithgareddau awyr agored er mwyn i'r plant gael profiad ymarferol o ddatrys problemau go iawn mewn agweddau fel mathemateg a gwyddoniaeth a dysgu am gadwraeth a chynladwyedd.

Sut bydd y plant yn dysgu?

Mae'r Cyfnod Sylfaen yn gosod pwyslais mawr ar blant yn dysgu trwy wneud. Dylai plant ifanc gael mwy o gyfle i ennill profiad ymarferol trwy chwarae a chymryd rhan mewn gweithgareddau yn hytrach na thrwy gwblhau ymarferion mewn llyfrau. Er enghraifft, dylai mathemateg fod yn fwy ymarferol er mwyn i blant weld sut mae problemau'n cael eu datrys a pha mor bwysig yw mathe-mateg yn eu bywydau bob dydd. Rhoddir pwyslais ar ddatblygu sgiliau siarad a gwrando'r plant, a fydd yn gosod sylfaen gadarn i ddatblygu sgiliau darllen ac ysgrifennu. Dylid rhoi mwy o bwyslais ar sut mae pethau'n gweithio a dod o hyd i ffyrdd gwahanol o ddatrys problemau.





THE CURRICULUM

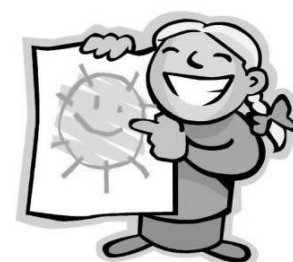
In accordance with the requirements of the Education Act 1988, the Education Authority has formed and intends to review regularly, a written statement of its policy regarding the secular curriculum. The requirements of the National Curriculum are interpreted in light of the Authority's current philosophy and policies.

The Foundation Phase Reception Y1 and Y2 Children

The curriculum for the Foundation Phase builds on the current 'Desirable Outcomes for Children's Learning Before Compulsory School Age' and includes aspects of the guidance for Key Stage 1.

The curriculum is being developed under the following seven areas of learning:

1. Personal and Social Development, Well-being and Cultural Diversity
2. Language, Literacy and Communication Skills
3. Welsh Language Development
4. Mathematical Development
5. Knowledge and Understanding of the World
6. Physical Development
7. Creative Development.



The Foundation Phase places great emphasis on developing children's

- skills and understanding,
- personal, social, emotional, physical and intellectual well-being so as to develop the whole child
- positive attitudes to learning so that the children enjoy learning and will want to continue with their education for longer
- self-esteem and self-confidence to experiment, investigate, learn new things and form new relationships with others
- creative and expressive skills and observations to encourage their development as individuals, with different ways of responding to experiences
- outdoor activities for the children to experience hands-on ways of real-life problem solving in aspects such as mathematics and science, and learn about conservation and sustainability.

How will children learn?

The Foundation Phase places great emphasis on children learning by doing. Young children should be given more opportunities to gain first-hand experiences through play and active involvement rather than by completing exercises in books. For example, mathematics should be more practical so that children see how problems are solved and how important mathematics is in their everyday lives. Emphasis is placed on developing children's speaking and listening skills, which will set a solid basis for the development of reading and writing. There should be more emphasis on how things work and on finding different ways to solve problems.





Cyfnod Allweddol 2 (Cwricwlwm Cenedlaethol) Pynciau Craidd

Cymraeg a Saesneg

Llafaredd / Darllen / Ysgrifennu

Yng Nghyfnod Allweddol 2, bydd y dysgwyr yn adeiladu ar y sgiliau, yr wybodaeth a'r ddealltwriaeth a gaffaelwyd yn ystod y Cyfnod Sylfaen. Gwneir cynnydd trwy raglen integredig o lafaredd (siarad a gwranddo yn Saesneg), darllen ac ysgrifennu. Cyflwynir profiadau a chyfleoedd i'r dysgwyr sy'n cydblethu gofynion yr adrannau Sgiliau ac Ystod yn y rhaglenni astudio. Byddant yn datblygu i fod yn siaradwyr hyderus, cydlynol sy'n ennyn diddordeb, gan weithio fel unigolion ac fel aelodau o grŵp. Bydd eu profiadau yn cynnwys cael cyfleoedd i gymryd rhan mewn gweithgareddau drama a chwarae rôl. Byddant yn datblygu i fod yn wrandawyr gweithgar sy'n barod i ymateb mewn ystod eang o sefyllfaoedd. Drwy'r cyfnod allweddol, byddant yn profi ystod fwyfwy eang o destunau anodd, er mwynhad ac er gwybodaeth, er mwyn iddynt allu datblygu i fod yn ddarllenwyr rhugl ac effeithiol. Byddant yn ysgrifennu cymwys, gan ysgrifennu'n glir ac yn gydlynol mewn amryw o ffurfiau ac at wahanol ddibenion. Byddant yn meithrin mwy o ddealltwriaeth o'r angen i addasu eu llafar a'u hysgrifennu i gydweddu a'r diben a'r gynulleidfa. Byddant yn gweithio'n fwyfwy manwl gywir ac yn dechrau myfyrio a gwerthuso wrth ystyried eu cyraeddiadau eu hunain a chyraeddiadau eraill.



Mathemateg Mathematics

Sgiliau: Datrys problemau / Cyfathrebu yn fathemategol / Rhesymu yn fathemategol

Ystod: Rhif / Mesurau ac arian / Siâp, safle a symud / Trin data

Yng Nghyfnod Allweddol 2, bydd y dysgwyr yn adeiladu ar y sgiliau, yr wybodaeth a'r ddealltwriaeth a gaffaelwyd yn ystod y Cyfnod Sylfaen. Byddant yn parhau i ddatblygu agweddau cadarnhaol at fathemateg ac yn estyn eu meddwl mathemategol drwy ddatrys problemau mathemategol, cyfathrebu a rhesymu'n fathemategol gan ddefnyddio cyd-destunau ar draws yr ystod gyfan o fathemateg, ar draws y cwricwlwm ac fel y bo'n gymwys i broblemau o fywyd go-iawn. Byddant yn estyn eu defnydd o'r system rif, gan symud o gyfri'n ddibynadwy i gyfrifo'n rhugl gyda'r pedwar gweithrediad rhif, gan gynnwys yng nghyd-destun arian, er mwyn datrys problemau rhifiadol. Byddant yn ceisio datrys problem gyda dull pen cyn defnyddio unrhyw ddull arall ac yn defnyddio dulliau cyfrifo ysgrifenedig sy'n briodol i'w lefel dealltwriaeth. Byddant yn datblygu strategaethau amcangyfrif a'u cymhwyso i wirio cyfrifiadau, rhai ysgrifenedig ac ar gyfrifiannell. Byddant yn archwilio amrywiaeth helaeth o siapiau a'u priodweddau ac, yng nghyd-destun mesurau, yn defnyddio ystod o unedau ac offer ymarferol yn fwyfwy manwl gywir. Byddant yn casglu, cynrychioli a dehongli data at amryw o ddibenion. Byddant yn dewis, trafod, esbonio a chyflwyno

Gwyddoniaeth

Sgiliau: Cyfathrebu Ymholiad—cynllunio, datblygu a myfyrio

Ystod: Cyd-ddibyniaeth organebau, Y Ddaear gynaliadwy, Sut mae pethau'n gweithio

Yng Nghyfnod Allweddol 2, dylai'r dysgwyr gael cyfleoedd i adeiladu ar y sgiliau, yr wybodaeth a'r ddealltwriaeth a gaffaelwyd yn ystod y Cyfnod Sylfaen. Dylent ddatblygu eu sgiliau trwy'r ystod Cyd-ddibyniaeth organebau, Y Ddaear gynaliadwy a Sut mae pethau'n gweithio. Dylid addysgu'r dysgwyr i berthnasu eu sgiliau, eu gwybodaeth a'u dealltwriaeth wyddonol i gymwysiadau gwyddoniaeth ym mywyd bob dydd, gan gynnwys materion cyfredol. Dylid eu haddysgu i gydnabod bod modd gwerthuso syniadau gwyddonol trwy gyfrwng gwybodaeth a gasglwyd o arsylwadau a mesuriadau. Dylai'r addysgu annog y dysgwyr i reoli eu dysgu eu hunain a datblygu strategaethau dysgu a meddwl sy'n briodol i'w haeddfedrwydd. Dylid eu haddysgu i werthfawrogi safbwyntiau pobl eraill a bod yn ddinasyddion lleol cyfrifol.

Dylai gweithgareddau feithrin chwilfrydedd a chreadigrwydd a bod yn ddiddorol, plerus, perthnasol a heriol i'r dysgwr. Dylent gynnig modd i'r dysgwyr gynnig, archwilio a rhannu syniadau, ac estyn, mireinio a chymhwyso eu sgiliau, eu gwybodaeth a'u dealltwriaeth mewn sefyllfaoedd newydd. Dylent neilltuo amser ar gyfer meddwl, trafod â chyfoedion a myfyrio.

Key Stage 2 (National Curriculum)

Core Subjects



Welsh and English

Oracy, Reading, Writing

At Key Stage 2 learners build on the skills, knowledge and understanding acquired during the Foundation Phase. This progress is achieved through an integrated programme of oracy (speaking and listening in English), reading and writing. Learners are presented with experiences and opportunities that interrelate the requirements of the Skills and Range sections of the programmes of study. Learners become confident, coherent and engaging speakers, working as individuals and as members of a group. The experiences presented to them include opportunities to take part in drama and role-play activities. They develop as active and responsive listeners in a wide range of situations.

Throughout the key stage, they experience a progressively wide range of demanding texts, for enjoyment and information, so that they can develop into fluent and effective readers. They become competent writers, writing clearly and coherently in a range of forms and for a range of purposes. They acquire a growing understanding of the need to adapt their language to suit purpose and audience. They work with increasing accuracy and become reflective and evaluative in relation to their own and others' achievements.



Mathematics Skills:

Solve Problems, Communicate mathematically, Reason mathematically

Range: Number, Measures and Money, Shape, Position and Movement, Handling Data

At Key Stage 2 learners build on the skills, knowledge and understanding acquired during the Foundation Phase. They continue to develop positive attitudes towards mathematics and extend their mathematical thinking by solving mathematical problems, communicating and reasoning mathematically using contexts from across the whole range of mathematics, across the curriculum and as applied to real-life problems. They extend their use of the number system, moving from counting reliably to calculating fluently with all four number operations, including in the context of money, in order to solve numerical problems. They try to tackle a problem with a mental method before using any other approach and use written methods of calculation appropriate to their level of understanding. They develop estimation strategies and apply these to check calculations, both written and by calculator. They explore a wide variety of shapes and their properties and, in the context of measures, use a range of units and practical equipment with increasing accuracy. They collect, represent and interpret data for a variety of purposes. They select, discuss, explain and present their methods and reasoning using an increasing range of mathematical language, diagrams and charts.

Science Skills:

Communication, Enquiry - planning, developing and reflecting

Range: Interdependence of organisms, The sustainable Earth, How things work

At Key Stage 2 learners should receive opportunities to build on the skills, knowledge and understanding acquired during the Foundation Phase. They should develop their skills through the range of Interdependence of organisms, The sustainable Earth and How things work. Learners should be taught to relate their scientific skills, knowledge and understanding to applications of science in everyday life, including current issues. They should be taught to recognise that scientific ideas can be evaluated by means of information gathered from observations and measurements. Teaching should encourage learners to manage their own learning and develop learning and thinking strategies appropriate to their maturity through investigation and experimentation. They should be taught to value others' views and show responsibility as local citizens. Activities should foster curiosity and creativity and be interesting, enjoyable, relevant and challenging for the learner. They should enable learners to initiate, explore and share ideas, and extend, refine and apply their skills, knowledge and understanding in new situations. They should allow time for thinking, peer discussion and reflection.



Pynciau Di-graidd

Technoleg Gwybodaeth / Information Technology

Sgiliau: Darganfod a dadansoddi gwybodaeth, Creu a throsglwyddo gwybodaeth

Yng Nghyfnod Allweddol 2, dylid rhoi cyfleoedd i'r dysgwyr adeiladu ar y profiadau a gawsant yn ystod y Cyfnod Sylfaen. Dylid eu haddysgu i ystyried y math o wybodaeth sydd ei angen arnynt i gefnogi eu tasgau a'u gweithgareddau a sut y gallant ddod o hyd i'r wybodaeth honno; defnyddio ystod gynyddol o offer ac adnoddau TGCh i ddarganfod, prosesu a throsglwyddo gwybodaeth berthnasol o amrywiaeth o ffynonellau penodol diogel ac addas; a datblygu a chyfleu eu syniadau mewn ffyrdd priodol gan ddatblygu ymdeimlad o ddiben a chynulleidfa.



Dylunio a Thechnoleg

Sgiliau: Dylunio, Gwneud — bwyd, defnyddiau hyblyg ac anhyblyg, systemau a rheoli

Yng Nghyfnod Allweddol 2, dylid rhoi cyfleoedd i'r dysgwyr adeiladu ar y profiadau a gawsant yn ystod y Cyfnod Sylfaen. Dylid eu haddysgu i ddylunio a gwneud cynhyrchion syml trwy gyfuno'u sgiliau dylunio a gwneud â gwybodaeth a dealltwriaeth, a hynny mewn cyd-destunau sy'n cefnogi'u gwaith mewn pynciau eraill ac sy'n helpu i ddatblygu eu dealltwriaeth o'r byd gwneud. Dylid sicrhau bod y dysgwyr yn ymwybodol o'r hyn y mae pobl wedi'i gyflawni a'u bod yn ymwybodol o'r syniadau mawr sydd wedi dylanwadu ar y byd. Dylid eu hannog i fod yn greadigol ac yn arloesol wrth ddylunio a gwneud, a dylid sicrhau ar yr un pryd eu bod yn ymwybodol o faterion sy'n ymwneud â chynaliadwyedd a'r amgylchedd yn yr unfed ganrif ar hugain.

Hanes

Sgiliau: Ymwybyddiaeth gronolegol, Gwybodaeth a dealltwriaeth hanesyddol, Dehongliadau o hanes, Ymholi hanesyddol, Trefnu a chyfathrebu

Ystod: Astudio, Cynnal, Gofyn ac ateb cwestiynau

Yng Nghyfnod Allweddol 2, bydd y dysgwyr yn adeiladu ar y sgiliau, yr wybodaeth a'r ddealltwriaeth a gaffaelwyd yn ystod y Cyfnod Sylfaen. Byddant yn cael profiadau sy'n gwneud hanes yn ddiddorol, arwyddocaol ac yn rhywbeth i'w fwynhau. Byddant yn datblygu eu chwilfrydedd am y gorffennol, nodweddion gwahanol gyfnodau yn y gorffennol, o'r cyfnodau cynharaf hyd heddiw, a'r ffyrdd y maent yn wahanol i'w gilydd ac i'r presennol. Byddant yn dysgu drwy ymholi am ffyrdd o fyw gwahanol bobl yn y cyfnodau hanesyddol hyn, gan dynnu ar ddatblygiadau pwysig, digwyddiadau allweddol a phobl nodedig yn eu hardal, yng Nghymru ac ym Mhrydain. Byddant yn cymryd rhan mewn ymholiadau hanesyddol ysgogol a chlir eu ffocws gan ddefnyddio ystod eang o ffynonellau, gan gynnwys cynrychiolaethau a dehongliadau o'r gorffennol, a threfnu a chyfleu eu sgiliau, eu gwybodaeth a'u dealltwriaeth mewn amrywiaeth gynyddol o ffyrdd.

Daearyddiaeth

Sgiliau: Lleoli lleoedd, amgylcheddau a phatrymau, Deall lleoedd, amgylcheddau a phrosesau, Ymchwilio, Cyfathrebu

Ystod: Astudio, Gwneud, Gofyn ac ateb cwestiynau

Yng Nghyfnod Allweddol 2, bydd y dysgwyr yn adeiladu ar y sgiliau, yr wybodaeth a'r ddealltwriaeth a gaffaelwyd yn ystod y Cyfnod Sylfaen. Bydd daearyddiaeth yn datblygu ac yn ysgogi diddordeb y dysgwyr mewn lleoedd a'r byd o'u cwmpas, ac yn meithrin ymdeimlad o ryfeddod am lleoedd a'r byd o'u cwmpas. Trwy astudio eu cymdogaeth eu hunain yng Nghymru, y byd ehangach, gwahanol amgylcheddau a digwyddiadau yn y newyddion, bydd y dysgwyr yn datblygu eu dealltwriaeth o sut le ydyn nhw a sut a pham y byddant yn newid. Trwy weithgareddau ymarferol a gwaith ymchwil eu hunain yn yr ystafell ddosbarth ac yn yr awyr agored, bydd y dysgwyr yn datblygu sgiliau i gasglu a gwneud synnwyr o wybodaeth, defnyddio mapiau, meddwl yn greadigol a rhannu syniadau trwy drafod. Mae daearyddiaeth yn darparu cyfleoedd i'r dysgwyr ystyried materion pwysig am eu hamgylchedd, a chydabod sut y bydd pobl o bob cwr o'r byd wedi'u cysylltu â'i gilydd. Ceisir eu hannog i ddeall pwysigrwydd cynaliadwyedd, datblygu pryder gwybodus am ansawdd eu hamgylchedd, a chydabod eu bod yn ddinasyddion byd-eang.



Non-core Subjects

Information Technology

Skills: Find and analyse information, Create and communicate information

At Key Stage 2 learners should be given opportunities to build on the experiences acquired during the Foundation Phase. They should be taught to consider the sort of information they require to support their tasks and activities and how they might locate that information; to use an increasing range of ICT tools and resources to find, process and communicate relevant information from a variety of given safe and suitable sources; to develop and communicate their ideas in appropriate ways with a developing sense of purpose and audience.



Design and Technology

Skills: Designing, Making - food, rigid and flexible materials, systems and control

At Key Stage 2 learners should be given opportunities to build on the experiences acquired during the Foundation Phase. They should be taught to design and make simple products by combining their designing and making skills with knowledge and understanding in contexts that support their work in other subjects and help develop their understanding of the made world. Learners should be made aware of human achievements and the big ideas that have shaped the world. They should be encouraged to be creative and innovative in their designing and making while being made aware of issues relating to sustainability and environmental issues in the twenty-first century.

History

Skills: Chronological awareness, Historical knowledge and understanding, Interpretations of history, Historical enquiry, Organisation and communication

Range: Study, Carry out, Ask and answer the questions

At Key Stage 2, learners build on the skills, knowledge and understanding acquired during the Foundation Phase. They have experiences that make history enjoyable, interesting and significant. They develop their curiosity about the past, the characteristics of different periods, from early times to the present, and the ways in which they are different from each other and from the present. They learn by enquiry about the ways of life of different people in these periods of history, drawing on important developments, key events and notable people in their locality, Wales and Britain. They engage in stimulating and focused historical enquiry using a wide range of sources, including representations and interpretations of the past, and organise and communicate their skills, knowledge and understanding in an increasing variety of ways.

Geography

Skills: Locating places, environments and patterns, Understanding places, environments and processes, Investigating, Communicating

Range: Study, Carry out, Ask and answer the questions

At Key Stage 2 learners build on the skills, knowledge and understanding acquired during the Foundation Phase. Geography develops and stimulates learners' interest in, and fosters a sense of wonder of, places and the world about them. Through the study of their own Welsh locality, the world beyond, different environments and events in the news, learners develop their understanding of what places are like and how and why they change. Through practical activities and first-hand investigations in the classroom and out of doors, learners develop skills to gather and make sense of information, use maps, think creatively and share ideas through discussion. Geography provides opportunities for learners to consider important issues about their environment, and to recognise how people from all over the world are linked. They are encouraged to understand the importance of sustainability, develop an informed concern about the quality of their environment, and to recognise that they are global citizens.



Cerddoriaeth

Sgiliau: Perfformio, Cyfansoddi, Gwerthuso

Ystod: Perfformio, Cyfansoddi, Gwerthuso

Yng Nghyfnod Allweddol 2, dylai gweithgareddau cerddoriaeth alluogi'r dysgwyr i adeiladu ar y sgiliau, yr wybodaeth a'r ddealltwriaeth a gaffaelwyd yn ystod y Cyfnod Sylfaen. Bydd addysg am gerddoriaeth yn galluogi'r dysgwyr i ymwneud â cherddoriaeth a mwynhau creu cerddoriaeth. Trwy gymryd rhan weithredol mewn gwaith perfformio, cyfansoddi a gwerthuso cerddoriaeth, bydd y dysgwyr yn datblygu eu sensitifrwydd i gerddoriaeth a'u dealltwriaeth ohoni. Bydd y dysgwyr yn datblygu sgiliau cerddorol sy'n ymwneud â rheoli, trin a chyflwyno sain. Yng Nghyfnod Allweddol 2, bydd y sgiliau hynny'n cynnwys canu, chwarae offerynnau ac ymarfer; creu cerddoriaeth yn fyrfyfyr, cyfansoddi a threfnu cerddoriaeth; a gwranddo ar gerddoriaeth a'i gwerthuso. Dylai'r dysgwyr wella'u gwaith perfformio, cyfansoddi a gwerthuso trwy ddatblygu a defnyddio'u meddwl a'u sgiliau cyfathrebu, a dylent roi ystyriaeth briodol i iechyd a diogelwch.



Addysg Gorfforol

Sgiliau: Gweithgareddau iechyd, ffitrwydd a lles, Gweithgareddau creadigol, Gweithgareddau antur, Gweithgareddau cystadleuol

Ystod: Gweithgareddau iechyd, ffitrwydd a lles, Gweithgareddau creadigol, Gweithgareddau antur, Gweithgareddau cystadleuol

Yng Nghyfnod Allweddol 2, bydd y dysgwyr yn adeiladu ar y sgiliau, yr wybodaeth a'r ddealltwriaeth a gaffaelwyd yn ystod y Cyfnod Sylfaen. Bydd addysg gorfforol yn annog y dysgwyr i archwilio a datblygu eu sgiliau corfforol sy'n hanfodol i gymryd rhan mewn amryw o wahanol weithgareddau. Trwy adeiladu ar y sgiliau hynny bydd cyfleoedd i fod yn greadigol ac yn ddychmygus mewn gweithgareddau gymnasteg a dawns. Trwy weithgareddau antur, byddant yn dysgu sut i nofio, bod yn ddiogel a theimlo'n hyderus yn y dŵr, a sut i ddarllen map neu ddilyn llwybrau, fel ei fod yn fwy diogel iddynt fynd ymhellach ac archwilio glan y môr a chefn gwlad. Bydd gweithgareddau cystadleuol yn cynnig cyfle i ddysgu sgiliau gemau a chwarae mewn tîm, yn ogystal â sut i redeg yn gyflymach, neidio'n uwch a thafu'n bellach. Bydd y dysgwyr yn dechrau deall bod addysg gorfforol yn ymwneud â dysgu sut i deimlo'n iach a pharhau'n ffit tra eu bod yn cael hwyl, a gwybod sut mae'r gwahanol fathau o weithgareddau hyn yn helpu iddynt barhau'n iach ac yn ffit.

Addysg Grefyddol

Sgiliau: Ymdrin â'r cwestiynau sylfaenol, Archwilio creadau, dysgeidiaethau ac arfer(ion) crefyddol, Mynegi ymatebion personol

Ystod: Y byd , Profiad Dynol, Chwilio am ystyr

Yng Nghyfnod Allweddol 2, bydd addysg grefyddol yn meithrin diddordeb a rhyfeddod dysgwyr o'r byd a'r profiad dynol. Mae hyn yn eu hysgogi i ofyn ac ymchwilio cwestiynau dwfn sy'n ymwneud â'u profiadau personol, crefydd a bywyd yn gyffredinol, gan felly adeiladu ar y sgiliau, yr wybodaeth a'r ddealltwriaeth a gaffaelwyd yn ystod y Cyfnod Sylfaen. Trwy weithgareddau ysgogol ymarferol ac archwilio crefydd yn eu cymdogaeth yng Nghymru, ym Mhrydain ac yn y byd ehangach, bydd y dysgwyr yn datblygu sgiliau ac yn gasglu gwybodaeth a fydd yn eu cynorthwyo i feddwl yn greadigol am gwestiynau crefyddol a moesol sylfaenol a rhannu syniadau trwy drafod. Bydd gwybodaeth am grefydd(au) a chydabod pwysigrwydd crefydd ym mywydau pobl yn helpu datblygu goddefgarwch a pharch, a dylai helpu meithrin agweddau cyfrifol mewn cymdeithas leol a byd-eang. Trwy gyfranogi'n weithredol bydd y dysgwyr yn archwilio dimensiynau ysbrydol a moesol i'w cynorthwyo wrth iddynt chwilio am ystyr a phwrpas. Bydd y dysgwyr yn mynegi eu teimladau a'u barnau eu hunain, adnabod sut y gall eu gweithrediadau effeithio ar eraill, cydnabod bod safbwyntiau pobl eraill yn wahanol i'w safbwynt nhw a myfyrio ar eu persbectifau eu hunain ar fywyd, a'u haddasu fel y bo'n briodol.



Music

Skills: Performing, Composing, Appraising

Range: Performing, Composing, Appraising

At Key Stage 2, music activities should enable learners to build on the skills, knowledge and understanding acquired during the Foundation Phase. Music education enables learners to engage with and enjoy making music. Through active involvement in performing, composing and appraising, learners will develop their sensitivity to and understanding of music. Learners will develop musical skills relating to the control, manipulation and presentation of sound. At Key Stage 2, these skills include singing, playing instruments and practising; improvising, composing and arranging music; and listening to and appraising music. Learners should improve their performing, composing and appraising by developing and applying their thinking and communication skills, and give due regard to health and safety.



Physical Education

Skills: Health, fitness and well-being activities, Creative activities, Adventurous activities, Competitive activities

Range: Health, fitness and well-being activities, Creative activities, Adventurous activities, Competitive activities

At Key Stage 2 learners build on the skills, knowledge and understanding acquired during the Foundation Phase. Physical education encourages learners to explore and develop the physical skills essential to taking part in a variety of different activities. Building on these skills are opportunities to be creative and imaginative in gymnastic and dance activities. Through adventurous activities, our children learn how to swim, be safe and feel confident in water and how to read a map or follow trails, so that it becomes safer to go further afield and explore the seashore and countryside. Competitive activities offer the chance to learn games skills and play in a team, as well as how to run faster, jump higher and throw further. Learners begin to understand that physical education is about learning how to feel healthy and stay fit while having fun, and knowing how these different types of activities help them to stay that way.

Religious Education

Skills: Engaging with fundamental questions, Exploring religious beliefs, teachings and practice(s), Expressing personal responses

Range: The world, Human experience, Search for meaning

At Key Stage 2, religious education fosters learners' interest and wonder in the world and human experience. This stimulates them into raising and investigating deep questions that relate to their personal experiences, religion and life in general, thus building on the skills, knowledge and understanding acquired during the Foundation Phase. Through practical stimulating activities and exploration of religion in their locality in Wales, in Britain and the wider world, learners will develop skills and gather information that will help them think creatively about fundamental religious and moral questions and share ideas through discussion. Knowledge of religion(s) and a recognition of the importance that religion plays in people's lives will help to develop tolerance and respect, and should foster responsible attitudes in local and global society. Through active participation, learners will explore the spiritual and moral dimensions in order to inform their own search for meaning and purpose. Learners will express their own feelings and opinions, identify how their actions may affect others, recognise that other people's viewpoints differ from their own and reflect on and revise their own perspectives on life as appropriate.



PATRW M GWAITH

Ceisir sicrhau bod yr addysg a ddarperir yn hybu datblygiad moesol, diwylliannol, meddyliol a chorfforol pob disgybl a bod natur y cwricwlwm cyflawn yn wahaniaethol, eang a chytbwys. I ymateb i'r gofynion hyn bydd trefniant y dosbarth yn hyblyg; gwaith grŵp, unigol, parau a dosbarth cyfan, weithiau darperir gwaith ar sail oedran, neu bydd plant o ystod oedran sy'n rhychwantu mwy nag un blwyddyn ysgol yn cydweithio ar un dasg. Dysgir y plant o dan ofal un athro neu athrawes, a manteisir hefyd ar arbenigeddau staff i ddysgu rhai pynciau. Er mwyn sicrhau nag eithrir elfennau hanfodol o'r cwricwlwm cyflwynir profiadau a gweithgareddau i blant yn draws-ddisgyblaethol, mewn unedau penodol a thrwy ddilyn themau penodol dros gylch o 2 flynedd.



FFRAMWAITH LLYTHRENNEDD A RHIFEDD

Ymhlith blaenoriaethau'r Gweinidog Addysg a Sgiliau mae'r angen i wella safonau llythrennedd a rhifedd gan leihau effeithiau amddifadedd ar gyrhaeddiad addysgol. Mae'r Rhaglen Lythrennedd Genedlaethol a'r Rhaglen Rhifedd Genedlaethol yn gosod gweithrediadau y mae Llywodraeth Cymru wedi eu rhoi ar waith ar gyfer gwella safonau llythrennedd a rhifedd yng Nghymru. Mae fframwaith cenedlaethol statudol a phrofion cenedlaethol yn rhan annatod o'r ddwy rhaglen. Yn bennaf oll, offeryn cynllunio'r cwricwlwm yw'r FfLIRh sy'n cynorthwyo pob athro/athrawes i gynnwys llythrennedd a rhifedd yn rhan annatod o addysgu'r cwricwlwm. Nod y Fframweithiau yw i gynorthwyo pob athro/athrawes i ystyried bod ganddo/ganddi rôl bwysig o ran datblygu sgiliau llythrennedd a rhifedd eu dysgwyr. Mae'r Fframwaith Llythrennedd a Rhifedd Cenedlaethol yn canolbwyntio ar dri maes llythrennedd a phedwar llinyn rhifedd, ac mae gwahanol elfennau o fewn y llinynnau hynny. Bydd y disgwyliadau ym mhob un o'r llinynnau yn gymorth i athrawon bennu'n fanwl gywir y cynnydd a ddisgwylyr yn y sgiliau hyn mewn cyd-destun sy'n addas i'r oedran.

Llinynnau Llythrennedd

Llafaredd
Darllen
Ysgrifennu

Llinynnau Rhifedd

Defnyddio ymresymu rhifyddol
Defnyddio sgiliau rhif
Defnyddio sgiliau mesur
Defnyddio sgiliau data

PROFION DARLLEN A RHIFEDD STATUDOL

Mae gwella safonau llythrennedd a rhifedd yn holl bwysig er mwyn sicrhau bod ein pobl ifanc yn datblygu'r sgiliau sydd eu hangen arnyn nhw i lwyddo. Bydd y profion yn helpu athrawon ac ysgolion i nodi cryfderau a gwendidau unigolion a grwpiau o ddysgwyr. Byddant yn helpu i sicrhau bod y rhai hynny sydd angen cymorth ychwanegol arnyn nhw yn cael eu nodi a'u cynorthwyo, a byddan nhw'n ein helpu ni i ganfod os yw ein polisiau yn cael yr effaith briodol. Bydd y Profion Darllen a Rhifedd Cenedlaethol yn cael eu rhoi ar waith yn statudol. Bydd yn ofynnol i bob dysgwr o Flynyddoedd 2 i 9 sefyll y prawf darllen a'r prawf rhifedd. Dim ond y prawf darllen Cymraeg fydd yn rhaid i'r dysgwyr ym Mlynnyddoedd 2 a 3, sy'n dysgu trwy gyfrwng y Gymraeg, ei sefyll. Fodd bynnag, caiff ysgolion ddewis rhoi prawf i ddysgwyr Blwyddyn 3 yn Saesneg hefyd, os ydyn nhw'n dymuno. O Flwyddyn 4 ymlaen, bydd dysgwyr sy'n dysgu trwy gyfrwng y Gymraeg yn sefyll profion Cymraeg a Saesneg. Bydd rhieni yn derbyn adroddiad am gyrhaeddiad eu plant/plentyn yn y profion ar ddiwedd y flwyddyn addysgol.

DOGFENNAU CWRICWLAIDD

Mae dogfennau cwricwlaidd ar gael yn yr ysgol. Cysylltwch â'r pennaeth os ydych am eu gweld.



WORK PATTERN

We endeavour to ensure that the education we provide encourages the cultural, moral, intellectual and physical development of each child, and that the nature of the curriculum as a whole is differentiated, broad and balanced. To respond to these requirements, class organisation is flexible – group, individual, pair and whole-class work. Sometimes, work is provided on the basis of age, at other times children of various ages spanning more than one school year will work together on the same task. The pupils are taught in the care of one designated teacher, and we take advantage of teacher expertise for some subjects. In order to ensure that essential elements of the curriculum are not excluded, children are provided with experiences and activities in a cross-disciplinary way, in specific units and by following particular themes on a 2 year cycle.



LITERACY AND NUMERACY FRAMEWORK

Among the Minister for Education and Skills' priorities is the need to improve standards of literacy and numeracy and reduce the impact of deprivation on educational attainment. The National Literacy Programme and the National Numeracy Programme set out the actions the Welsh Government intends to implement to improve literacy and numeracy standards in Wales. The plans for a statutory national framework and for a system of national testing are integral to both programmes. The LNF is first and foremost a curriculum planning tool that supports all teachers to embed literacy and numeracy in their teaching of the curriculum. The aim of the Framework is to support all teachers to see themselves as having an important role in developing the literacy and numeracy skills of their learners. The LNF focuses on three strands of literacy and four strands of numeracy, with distinct elements within those strands. The expectations in each of the strands help teachers to get precision in the expected progress of these skills in an age appropriate context.

Literacy Strands

Oracy
Reading
Writing

Numeracy Strands

Developing numerical reasoning
Using number skills
Using measuring skills
Using data skills

STATUTORY READING AND NUMERACY TESTS

Improving standards of literacy and numeracy is vital in order to ensure that our young people develop the skills required to succeed. The tests will help teachers and schools to identify the strengths and weaknesses of individuals and groups of learners. They will help ensure that those who require additional help are identified and supported, and will help us discover whether or not our policies are having the desired effect. The implementation of the National Reading and Numeracy Tests is statutory. Every learner from Years 2 to 9 is expected to take the reading test and numeracy test. Learners in Years 2 and 3, who learn through the medium of Welsh, will only be required to take the Welsh reading test. Schools will, however, be given the option of administering the test to Year 3 learners in English too, if they wish. From Year 4, learners learning through the medium of Welsh will take Welsh and English tests. Parents will receive a report on their children's/child's attainment in the tests, at the end of the school year.

CURRICULUM DOCUMENTS

Curriculum documents are available at school. Consult the Headteacher if you would like to see them.



SGILIAU AR DRAWS Y CWRICWLWM

Mae 'Fframwaith sgiliau ar gyfer dysgwyr 3 i 19 oed yng Nghymru' anstatudol wedi cael ei ddatblygu er mwyn cynnig arweiniad ynghylch parhad a dilyniant mewn datblygu meddwl a TGCh i ddysgwyr 3 - 19 oed. Yng Nghyfnodau Allweddol 2 a 3, dylid rhoi cyfleoedd i'r dysgwyr adeiladu ar y sgiliau y maent wedi dechrau eu caffael a'u datblygu yn ystod y Cyfnod Sylfaen. Dylai'r dysgwyr barhau i gaffael, datblygu, ymarfer, cymhwyso a mireinio'r sgiliau hyn trwy dasgau grŵp a thasgau unigol mewn amrywiaeth o gyd-destunau ar draws y cwricwlwm. Gellir gweld cynnydd yn nhermau mireinio'r sgiliau hyn a thrwy eu cymhwyso i dasgau sy'n symud o'r diriaethol i'r haniaethol; syml i'r cymhleth; personol i'r 'darlun mawr'; cyfarwydd i'r anghyfarwydd; a dibynnol i'r annibynnol a'r cyd-ddibynnol.

Datblygu Meddwl

Bydd y dysgwyr yn datblygu eu meddwl ar draws y cwricwlwm trwy'r prosesau cynllunio, datblygu a myfyrio.



Datblygu TGCh Bydd y dysgwyr yn datblygu eu sgiliau TGCh ar draws y cwricwlwm trwy ddarganfod, datblygu, creu a chyflwyno gwybodaeth a syniadau a thrwy ddefnyddio ystod eang o offer a meddalwedd.

DYSGU AR DRAWS Y CWRICWLWM

Yng Nghyfnodau Allweddol 2 a 3, dylid rhoi cyfleoedd i'r dysgwyr adeiladu ar y profiadau a gaffaelwyd yn ystod y Cyfnod Sylfaen, a hybu eu gwybodaeth a'u dealltwriaeth o Gymru, eu datblygiad personol a chymdeithasol a'u lles, a'u hymwybyddiaeth o'r byd gwaith.



Y Cwricwlwm Cymreig 7 – 14 oed

Dylai dysgwyr 7– 14 oed gael cyfleoedd i ddatblygu a chymhwyso gwybodaeth a dealltwriaeth o nodweddion diwylliannol, economaidd, amgylcheddol, hanesyddol ac ieithyddol Cymru.

Addysg Personol a Chymdeithasol

Dylai dysgwyr gael cyfleoedd i hyrwyddo eu hiechyd a'u lles emosiynol a'u datblygiad moesol ac ysbrydol; bod yn ddinasyddion gweithgar, hybu datblygiad cynaliadwy a dinasyddiaeth fyd-eang; paratoi ar gyfer dysgu gydol oes.



Gyrfaoedd a'r Byd Gwaith

Dylai dysgwyr 11–19 oed gael cyfleoedd i ddatblygu eu hymwybyddiaeth o'r maes gyrfaoedd a'r byd gwaith a sut mae eu hastudiaethau'n cyfrannu at baratoi ar gyfer bywyd gwaith.

Datblygu Cynaliadwy a Dinasyddiaeth Fyd Eang



Mae angen i ddysgwyr ddatblygu'r sgiliau, gwybodaeth, ag weddau a'r gwerthoedd i gymryd rhan mewn gwneud penderfyniadau yn unigol ac ar y cyd ar lefel lleol a byd-eang, a fydd yn gwella ansawdd bywyd yn y presennol heb niweidio'r blaned ar gyfer y dyfodol.

Bwyd a Ffitrwydd Mae Cwricwlwm 2008 yn atgyfnerthu safle addysg bwyd yn y cwricwlwm ysgol yng Nghymru'n sylweddol. Bydd sgiliau paratoi bwyd ymarferol yn orfodol yng Nghyfnod Allweddol 2.





SKILLS ACROSS THE CURRICULUM

A non-statutory Skills framework for 3 to 19 year olds in Wales has been developed in order to provide guidance about continuity and progression in developing thinking and ICT for learners from 3–19. At Key Stages 2 and 3, learners should be given opportunities to build on skills they have started to acquire and develop at Foundation Phase. Learners should continue to acquire, develop, practise, apply and refine these skills through group and individual tasks in a variety of contexts across the curriculum. Progress can be seen in terms of the refinement of these skills and by their application to tasks that move from: concrete to abstract; simple to complex; personal to the ‘big picture’; familiar to unfamiliar; and supported to independent and interdependent.

Developing Thinking

Learners develop their thinking across the curriculum through the processes of planning, developing and reflecting.



Developing ICT

Learners develop their ICT skills across the curriculum by finding, developing, creating and presenting information and ideas and by using a wide range of equipment and software.

LEARNING ACROSS THE CURRICULUM

At Key Stages 2 and 3, learners should be given opportunities to build on the experiences gained during the Foundation Phase, and to promote their knowledge and understanding of Wales, their personal and social development and well-being, and their awareness of the world of work.



Cwricwlwm Cymreig 7-14

Learners aged 7-14 should be given opportunities to develop and apply knowledge and understanding of the cultural, economic, environmental, historical and linguistic characteristics of Wales.

Personal and Social Education

Learners should be given opportunities to promote their health and emotional well-being and moral and spiritual development; to become active citizens and promote sustainable development and global citizenship; and to prepare for lifelong learning.



Careers and the World of Work

Learners aged 9-11 should be given opportunities to develop their awareness of careers and the world of work and how their studies contribute to their readiness for a working life.



Sustainable Development and Global Citizenship

Learners need to develop the skills, knowledge, attitudes and values to participate in decision-making individually and collectively, both locally and globally that will improve the quality of life now without damaging the planet for the future.

Food and Fitness

Curriculum 2008 substantially reinforces the position of food education in the school curriculum in Wales. Practical food preparation skills are mandatory in Key Stage 2.





GWAITH CARTREF

Nid yw addysg wedi ei gyfyngu i oriau ysgol nac ychwaith o fewn muriau'r ysgol.

Yn wythnosol rhoddir gwaith cartref i'r plant drwy dasgau penodol neu ar ffurf Llyfr Log. Tasgau pen-agored yw rhain sydd yn rhoi sialensau amrywiol i'r disgyblion yn ymwneud â themau neu brosiect penodol.



Pan ddigwydd hynny gobeithir y bydd y cartref yn cydweithredu i hybu gwaith y plant. Ambell dro bydd gweithgarwch arbennig yn gofyn am wybodaeth gan rieni, perthnasau a chymdogion neu'n gofyn am waith holi a darganfod ar ran y plant. Sylweddolir mai cyfrifoldeb y cartref yw'r plentyn yn ystod yr oriau hyn ac mai yng ngoleuni'r cyfrifoldeb hwnnw y bydd rhieni yn cytuno neu'n anghytuno i gydweithredu. Disgwylir i'r rhieni hybu ymroddiad y plant yn eu gwaith ysgol ac y byddant yn ceisio dyfnhau ymwybyddiaeth eu plant yn eu treftadaeth a'r byd o'u cwmpas yn ogystal ag yn sgiliau sylfaenol llythrennedd a rhif.

O dro i dro gall athro/athrawes ofyn i blentyn wneud gwaith ychwanegol er mwyn dileu rhyw wendid neu ganolbwyntio ar agwedd arbennig o'r gwaith. Bryd hynny gobeithir cael cydweithrediad llwyr y cartref ac anogaeth i'r plentyn gwblhau'r dasg.

DARLLEN GARTREF

Rydym yn argyhoeddiedig fod darllen yn rhan hynod bwysig yn natblygiad addysgol plentyn. Oherwydd hyn, mae gennym gynllun Darllen Gartref lle gofynnir i rieni ddarllen gyda'u plant yn rheolaidd. Yn ystod y blynyddoedd cyntaf, llyfrau Cymraeg a ddefnyddir, ac yna'r ddwy iaith o hynny ymlaen. Wrth gwrs, cynllun gwirfoddol ydyw er lles eich plentyn chi, ac nid oes gorfodaeth arnoch i'w ddilyn. Bydd aelod o staff yn monitro llyfrau Darllen Gartref plant yn y Cyfnod Sylfaen yn rheolaidd, ac yn eu newid pan fo angen. Yn CA2, rydym yn disgwyl i'r disgyblion ddod a'u llyfrau darllen gartref eu hunain i'w newid a'u bod yn dechrau dewis llyfrau addas eu hunain.

Yn ogystal, i hybu diddordeb mewn darllen byddwn yn dosbarthu catalogau llyfrau o bryd i'w gilydd. Nid oes unrhyw bwysau arnoch i brynu.

YMWELIADAU ADDYSGOL

Credwn fod mynd a phlant ar ymweliadau y tu allan i'r ysgol yn rhoi profiadau gwerthfawr iddynt, yn cyfoethogi eu bywydau a'u paratoi i fod yn ddinasyddion aeddfed.

Gall fod yn a) taith gerdded leol o gwmpas y pentref b) taith diwrnod mewn bus neu c) ymweliad lle bydd plant yn aros dros nos.

Yn achos b) a c) byddwn yn anfon manylion am y daith a gwybodaeth berthnasol i'r cartref gan fynnu fod yr ysgol yn cael caniatâd y rhieni cyn y caniateir i'r plentyn ymuno â'r gweithgaredd.

Lle bo elfen o gost e.e. cludiant, mynediad, ynghlwm â'r gweithgaredd gofynnir i rieni am gyfraniad gwirfoddol.



CYSWLLT Â'R GYMUNED

Rydym yn credu bod yr ysgol yn rhan annatod o'r gymuned ac yn helpu'r plant i feithrin parch at ei thraddodiadau a'i phobl. Byddwn yn ceisio meithrin cyswllt clos gyda'r gymuned leol, trwy weithgareddau megis Yr Urdd, gwasanaethau Diolchgarwch ac eraill yn y capel neu'r eglwys lleol, cyngherddau, canu i'r henoed a.y.y.b. Yn achlysurol, bydd aelodau o'r gymuned a gwasanaethau cyhoeddus yn dod i'r ysgol i sgwrsio a chyd-weithio gyda'r plant.



HOMEWORK

Education is not confined to school hours nor to the school building.

Sometimes, the children are given specific tasks as homework or a Learning Log. These are open ended tasks that should offer various challenges to the pupils. They will also work on particular themes or projects. When this happens, we trust that the home will co-operate to promote the children's work. Occasionally, a particular activity will require the knowledge of parents, relatives and neighbours, or require the children to investigate and discover. It is recognised that the home is responsible for the child at this time and that it is in light of that responsibility that parents will agree or refuse to co-operate. Parents are expected to promote the children's commitment to their school work and to enhance their children's awareness of their heritage and the world around them as well as the basic skills of literacy and numeracy.



From time to time, a teacher may ask a child to do extra work so as to eliminate a weakness or focus on a particular aspect of the work. At such times, hopefully the home will fully co-operate and the child will be encouraged to do the work.

READING AT HOME

We are convinced that reading has an extremely important role to play in a child's educational development. Consequently, we run a Home Reading scheme where parents are asked to read regularly with their children. During the first years, Welsh-language books are used, followed by both languages from then on. Of course, it is a voluntary scheme run for your child's benefit, and you are not under any obligation to follow it. A member of staff will monitor the children's Home Reading books in the Foundation Phase on a regular basis, and will exchange these as necessary. In KS2, the pupils themselves are expected to bring their home reading books to be exchanged and to start choosing suitable books. In addition to this, in order to promote an interest in reading we will distribute books catalogues from time to time. You are under no obligation to buy.

EDUCATIONAL VISITS

We believe that taking children out of school on visits provides them with valuable experiences, enriches their lives and prepares them to become mature citizens.

This could involve a) a local walk around the village; b) a day trip in a bus or c) an overnight, residential visit.

In the case of b) and c), we will send details of the trip and relevant information home, insisting that the school receives the parents' consent before allowing the child to join in the activity.

Where there is a cost involved in the activity, e.g. transport, admission, parents will be asked for a voluntary contribution to clear the cost.



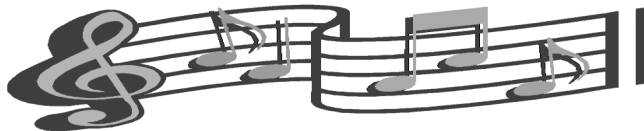
LINKS WITH THE COMMUNITY

We believe that the school is an integral part of the community and helps children to nurture a respect of its traditions and people. We endeavour to forge a close link with the local community through activities such as the Urdd, Thanksgiving and other services in a local chapel or church, concerts, entertaining senior citizens by singing, etc. At times, members of the community and public services will visit the school to talk to and collaborate with the children.



GWERSI OFFERYNNOL

Mae athrawon teithiol yn ymweld â'r ysgol i roi gwersi chwythbrennau ac offerynnau pres i'r plant hynny a fanteisia ar y cyfle (Cynigir i ddisgyblion o Flwyddyn 3 I 6). Cost y gwersi yw £4 yr un - £120 am y flwyddyn. (Cyfanswm o 30 gwersi y flwyddyn)



GWEITHGAREDDAU YCHWANEGOL /ALL-GWRICWLAIDD

Mae'r ysgol yn cynnig amrywiaeth o weithgareddau sy'n agored i holl ddisgyblion yr ysgol sydd ym marn y Pennaeth yn aeddfed ac yn barod i gymryd rhan ynddynt. Cystadleuwn yn Eisteddfod yr Urdd ac mewn cystadlaethau eraill a drefnir. Mae timau pêl-droed, criced, pêl-rwyd a rygbi yn yr ysgol a chymerant ran mewn cystadlaethau a drefnir un ai yn yr ysgol neu ar ôl oriau ysgol. Cefnogir hefyd gymdeithasau a chlybiau y mae'r plant yn perthyn iddynt y tu allan i oriau'r ysgol ac anogir y plant i ymuno â hwy.

Mae'r gweithgareddau hyn a drefnir gan yr ysgol i gyd yn amodol ar inni sicrhau cydweithrediad a chefnogaeth y rhieni. Ni all yr ysgol dderbyn cyfrifoldeb am oruchwylio plant ar derfyn sesiynau'r clybiau/cymdeithasau uchod a gofynnir i rieni a/neu warcheidwaid sicrhau eu bod yn gwneud trefniadau i hebrwng eu plant adref.

Cefnogwn weithgareddau yn y gymdeithas leol a threfnwn weithgareddau cyhoeddus. Cefnogwn amryw o fudiadau dyngarol. Trefnir gweithgareddau, yn achlysurol, i godi arian at Gronfa'r Ysgol.

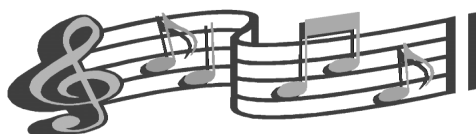
Pa weithgareddau/clybiau ychwanegol sydd ar gael yn Ysgol Llandegfan?

Pêl-droed Mae'r ysgol yn chwarae gemau cyfeillgar yn erbyn ysgolion lleol ac yn cymryd rhan yng nghystadlaethau Cwpan y Sir. Cynhelir clwb pêl-droed yn ystod Tymor yr Hydref pob wythnos	Rygbi Mae'r ysgol yn cynnig hyfforddiant rygbi yn ystod tymor y Gwanwyn a chwareir mewn sawl gwyl rygbi yn ystod y flwyddyn	Nofio I'r bechgyn a'r genethod ym mlynnyddoedd 0 - 6. Llogir bws i gludo'r plant i bwl nofio Bangor neu Langefni.
Pêl-rwyd Mae'r ysgol wedi ymuno â Chymdeithas Pêl-rwyd Cymru. Cynhelir clwb ar ôl ysgol yn ystod Tymor yr Hydref pob wythnos. Bydd yr ysgol yn cystadlu mewn sawl cystadlaethau pêl-rwyd yn ystod y flwyddyn.	Clwb Coginio Mae'r ysgol yn cynnig cyfres o sesiynau coginio i ddisgyblion Blwyddyn 6 yn ystod tymor yr Haf	Clybiau Celf/Gwyddoniaeth a Chyfridauron Yn ystod tymor yr Haf caiff disgyblion Blynnyddoedd 3, 4 a 5 gyfleon i gymryd rhan yn y clybiau uchod mewn cylchdro o 4 wythnos.
Yr Urdd Mae'r ysgol yn gefnogol iawn o Fudiad yr Urdd. Bydd yr ysgol yn cystadlu mewn sawl cystadlaethau chwaraeon ac Eisteddfodau yn flynyddol. Cynhelir cyfarfodydd o'r Urdd pob pythefnos drwy gydol y flwyddyn	Clwb Bocswn Mae Clwb Band/Bocswn yn cael ei gynnal yn yr ysgol pob wythnos yn y trydydd tymor i ddisgyblion Bl 5 a 6.	Clwb Dal i Fynd Clwb yn cynnig gemau amrywiol ar gyfer disgyblion y Cyfnod Sylfaen



ADDITIONAL MUSIC LESSONS

Peripatetic teachers visit the school to provide woodwind, and brass instrument lessons for those children who wish to take advantage of these. Lessons cost £4 each - £120 per year. (30 lessons per year)



ADDITIONAL ACTIVITIES

The school offers a variety of activities that are open to all of the school's pupils who are, in the Headteacher's opinion, sufficiently mature and ready to take part in them. We compete in the Urdd Eisteddfod and in other competitive events. The school has football, cricket, netball and rugby teams that take part in competitions held either during or after school hours. We also support after-school societies and clubs to which the children belong, and encourage the children to join these.

These activities organised by the school all depend on us securing the co-operation and support of parents. The school cannot accept responsibility for supervising children at the end of sessions of the above clubs/societies, and parents/guardians are asked to ensure that they make arrangements to take their children home.

We support events in the local community and organise public activities. We also support a number of humanitarian movements. Activities are occasionally organised to raise money for the School Fund.

Which additional activities/clubs are held at Ysgol Llandegfan?

<p style="text-align: center;">Football</p> <p>The school plays friendly matches against local schools and takes part in the County Cup competition. An after school football club is run during the Autumn term every week.</p>	<p style="text-align: center;">Rugby</p> <p>The school offers rugby training during the Spring term and the school competes in a number of festivals during the year.</p>	<p style="text-align: center;">Swimming</p> <p>For boys and girls from Year 1 to 6. The school hires a coach to take the pupils to Bangor or Llangefni Swimming Pool.</p>
<p style="text-align: center;">Netball</p> <p>The school is affiliated to the Welsh Netball Association. A Netball Club is held during the Autumn term every week. The school competes in a number of netball competitions during the year.</p>	<p style="text-align: center;">Cooking Club</p> <p>The school offers a series of cooking lessons for Year 6 pupils during the Summer term.</p>	<p style="text-align: center;">Art/Computer/Science Club</p> <p>During the Summer term Year 3,4,5 pupils have the opportunity to attend the above clubs in a rotation of 4 week periods.</p>
<p style="text-align: center;">Urdd</p> <p>The school is very supportive of the Urdd. The school competes in a number of sports competitions and the Eisteddfod annually. Meetings of the Urdd is held every fortnight in the school throughout the year.</p>	<p style="text-align: center;">Band Club / Bocswn</p> <p>Band Club/Bocswn is held in school every week during the third term for Year 5 and 6</p>	<p style="text-align: center;">Keep Going Club</p> <p>A club offering a variety of games for pupils of Foundation Phase age.</p>



YSGOL IACH

Ers peth amser mae'r ysgol wedi bod yn rhoi sylw i agweddau yn ymwneud ag iechyd a lles pawb sydd yn ymwneud â'r ysgol. Ym Medi 2006 derbyniwyd yr ysgol yn ffurfiol yn rhan o Gynllun Ysgol Iach Gwynedd a Môn sydd yn cael ei redeg drwy Lywodraeth y Cynulliad. Mae'r ysgol, a phawb sydd yn ymwneud â hi – yn blant, rhieni, staff, Llywodraethwyr a charedigion angen ymrwymo i nod y cynllun sef cyfrannu'n bositif tuag at sicrhau bod yr ysgol a'r amgylchfyd yn hyrwyddo iechyd yr holl gymuned.

Mae'r ysgol yn gweithio ar tua tri thema bob blwyddyn. Ac mae'r Ysgol wedi cyrraedd Cam 5. Rydym yn yawr yn gweithio tuag at y Cam Cenedlaethol.

Wrth gytuno i fod yn rhan o'r Cynllun Ysgolion Iach rydym fel ysgol wedi cytuno i,-

- Hybu cysylltiadau â'r Gymuned
- Gofalu am iechyd a lles y staff
- Annog y plant i fwyta'n iach
- Meithrin hunan-werth y disgyblion
- Sicrhau diogelwch yn yr ysgol



Creir Pwyllgor Ysgol iach yn flynyddol gan gynnwys plant o Flwyddyn 5 a 6.

PROSIECT YSGOLION GWYRDD-ECO 'SGOLION

Wrth ymrwymo i'r prosiect ysgolion gwyrdd rydym fel ysgol wedi cytuno i,-

- Leihau gwastraff
- Arbed ynni ac adnoddau naturiol
- Lleihau llygredd
- Gofalu am yr amgylchedd lleol
- Teithio'n ddoeth



Creir Pwyllgor Ysgol Werdd yn flynyddol gan gynnwys plant o flwyddyn 3 - 6.

Byddwn yn cynnal cyfarfodydd o bwyllgor yr 'Ysgolion Gwyrdd' tua unwaith bob chwe wythnos yn yr ysgol. Rydym wedi cael ein hachredu ar gyfer y wobr aur dair mlynedd yn olynol, ac wedi ennill y Fanner Werdd am y trydydd tro. Rydym wedi gwneud cryn dipyn i godi ymwybyddiaeth y plant o faterion gwyrdd- megis sefydlu sgwad sbwriel, gosod blychau ailgylchu ym mhob dosbarth, garddio, gwneud arolwg o'r ffyrdd y mae'r plant yn teithio i'r ysgol, arbed ynni a gwneud arolwg o'r cemegau sy'n cael eu defnyddio gan y gwasanaethau arlwygo a glanhau.

Yn eithaf ddiweddar gwobrwywyd Gardd Wyllt Yr Ysgol yn gyntaf gan Ymddiriedolaeth Natur Wyllt Gogledd Gymru. Mae yna bwll gwyllt, byrddau picnic, bwrdd adar a chartref cwsg y gaeaf i ddraenogod, yn ogystal â 'gwesty pryfetach' a blychau nythu, fel bod y plant yn gallu mwynhau dysgu am ryfeddodau natur mewn awyrgylch ddiogel.



Rydym hefyd yn falch iawn o'n strwythyrau helyg. Mae aelodau o'r gymuned a'r sgwad garddio o Flynyddoedd 5 & 6 wedi bod yn brysur iawn yn plannu a gofalu am ein llysiau yn ein gerddi clytwaith.

GARDDIO BYWYD GWYLLT
GOGLEDD CYMRU



WILDLIFE GARDENING
NORTH WALES



HEALTHY SCHOOL

For some time, the school has been addressing the health and well-being of all involved with the school. In September 2006, the school was formally accepted onto the Gwynedd and Môn Healthy Schools Scheme run by the Assembly Government. The school and all those involved with it – children, parents, staff, governors and friends – are required to commit themselves to the aim of the scheme, i.e. to contribute positively towards ensuring that the school and environment promote the health of the entire community.

The school works on approximately three themes every year. The school has succeeded in Phase 5 of the project and is now working towards the National level.

By becoming part of the Healthy Schools Project we have agreed to:

- Strengthen community links
- Encourage the children to eat a healthy diet.
- Ensure staff well being
- Develop pupils' self-esteem
- Ensure safety in the school



A Healthy School Committee is established annually and includes pupils from Years 5 and 6

THE GREEN SCHOOLS /ECO SCHOOLS PROJECT

By becoming part of the Green Schools Project we have agreed to,-

- Reduce waste
- Save energy and natural resources
- Reduce and prevent pollution
- Care for the local environment
- Travel wisely.



A Green School Committee is established annually and includes children from years 3 - 6.

The Green Schools Committee meets about once every six weeks. We have been accredited with three Green Schools Gold Awards as well as achieving the Eco School Status on three occasions. A great deal has been done to raise the children's awareness about green issues during the past few years, projects such as establishing a litter squad, placing recycling boxes in each class, conducting a survey of how children travel to school, saving energy and finding out which chemicals are used by the cleaning and catering services.

The school's Wildlife Garden was recently awarded 1st Prize by the North Wales Wildlife Trust and has been awarded the Gold Award in 2010. The garden has its own pond, picnic tables, a bird table, a hedgehog house, a 'bug hotel' and nesting boxes so that the children can enjoy learning about the wonders of nature in a safe environment. We are also very proud of our willow structures.



Members of the community helped by a group of parents and the gardening squads from Years 5 have been very busy planting and tending the vegetables in our patchwork

GARDDIO BYWYD GWYLLT
GOGLEDD CYMRU



WILDLIFE GARDENING
NORTH WALES



CLWB PLANT YSGOL LLANDEGFAN

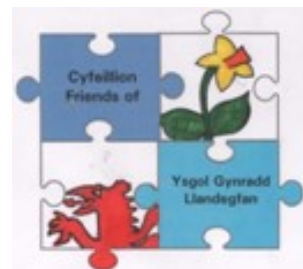
Nod y clwb yw rhoi gofal da am bris rhesymol i blant Llandegfan.

Mae'r clwb ar agor o 3.00pm - 5.30pm yn ddyddiol, ac yn ystod gwyliau'r ysgol o 8.00am - 5.30pm rhai dyddiau'r wythnos. Mae'r clwb wedi ei gofrestru i gymryd hyd at 24 o blant ar ôl ysgol – y cyn- taf i'r felin gaiff falu! Mae mwy o wybodaeth ar gael yn yr ysgol i unrhyw riant sydd â diddordeb mewn ymaelodi eu plant yn y clwb neu fe allwch gysylltu yn uniongyrchol gyda'r Clwb Plant drwy e-bostio clwbplantllandegfan@outlook.com neu cysylltu a'r rhif 07743559868.

CYFEILLION YSGOL LLANDEGFAN

Nod y Cyfeillion yw hyrwyddo addysg y plant drwy godi arian i brynu adnod- dau, cynnal nosweithiau cymdeithasol/codi arian a dyfnhau'r berthynas rhwng staff, rhieni a phobl eraill sy'n ymwneud â'r ysgol ac yn cynorthwyo mewn ffyrdd ymarferol a chefnogol.

'Rydym yn ddiolchgar iawn i'r Cyfeillion am eu gwaith caled, eu hymroddi- ad a'u haelioni.



YSGOL DAVID HUGHES

Mae gennym gyswllt da iawn gyda'r Ysgol Uwchradd leol, sef Ysgol David Hughes a bydd y plant hynaf yn ymweld i wahanol weithgareddau nifer o weithiau mewn blwyddyn. Ar ddiwedd B6, bydd y plant yn cael cyfle i gael ymweliad mwy ffurfiol i'w paratoi at fis Medi. Bydd cyfle i'r rhieni gyfar- fod â rhai aelodau o'r staff hefyd. Y nod yw hyrwyddo'r trosglwyddiad i bawb. Ar ddechrau B6, ceuwch wybodaeth am Ysgol David Hughes, a sut i wneud cais i'r AALI pe baech eisiau i'ch plentyn fynychu ysgol uwchradd wahanol.

CREFYDD

Nid yw'r ysgol hon yn dal cysylltiad uniongyrchol a ffurfiol ag unrhyw enwad crefyddol.

Trefnir addoliad dyddiol unai yn dorfol neu fel dosbarthiadau unigol.

Gwahoddir ymwelwyr i'r ysgol i gydaddoli â'r plant ac i arwain mewn addoliad.

Weithiau trefnir gwasanaethau arbennig ar Ddiolchgarwch a'r Nadolig, yn arferol yn addoldai lleol, pan wahoddir y rhieni, llywodraethwyr yr ysgol, ayyb. iddynt. Cesglir arian ynddynt tuag at acho- sion da.

Croesawir cyfleon i gyfrannu neu i ymuno mewn gwasanethau crefyddol a drefnir gan yr eglwys neu gapel yn y pentref.

Mae'r addysg grefyddol a gyflwynir yn seiliedig ar faes llafur cydnabyddedig yr Awdurdod. Gellir archwilio copi o'r maes llafur hwn yn yr ysgol.

Gellir gwneud trefniadau ar gyfer plant nad yw eu rhieni am iddynt fynychu'r gwasanaethau crefyddol neu astudiaethau cyffelyb.

CYNGOR YSGOL

Mae Ysgol Gynradd Llandegfan yn credu'n gryf mewn rhoi llais i blant yr Ysgol. Oherwydd hyn, bydd y plant yn flynyddol yn ethol eu cyfoedion i fod ar Gyngor yr Ysgol. Rydym hefyd yn rhan o gynllun llysgenhadon Comisiynydd Plant Cym- ru.

Bydd y cyngor yn cyfarfod yn rheolaidd, ac yn rhoi cyfle i'r disgyblion fynegi eu barn ar faterion pethnasol iddynt hwy.





KIDS' CLUB

The aim of the Club is to provide affordable, quality childcare for children in Llandegfan.

The After School Club is open from 3.00pm to 5.30pm and assuming that there is sufficient demand during the school holidays from 8.00am to 5.30pm.

The Club is registered to take a maximum of 24 and bookings are taken on a first come, first served basis. If any parents are interested in enrolling their children in the Club information is available through the school or you can contact the Kids Club directly by e-mail clwbplantllandegfan@outlook.com or contacting 07743559868

FRIENDS OF YSGOL LLANDEGFAN

The Friends' aim is to promote the children's education by raising funds to purchase resources, hold social/fund-raising evenings and deepen the relationship between staff, parents and others who are involved with the school and who help in practical and supportive ways.

We are very grateful to the Friends for their hard work, commitment and generosity.



YSGOL DAVID HUGHES

We have a very good link with the local secondary school, namely Ysgol David Hughes and the eldest children visit to undertake various activities several times a year. At the end of Y6, the children will be given the opportunity for a more formal visit to prepare them for September. There will also be an opportunity for parents to meet some members of staff. The aim is to facilitate the transition for all concerned. At the beginning of Y6, you will be provided with information about Ysgol David Hughes, and how to apply to the LEA should you wish your child to attend a different secondary school.

RELIGION

This school has no direct or formal affiliation with any religious denomination.

Daily worship is organised either collectively or as individual classes. Visitors from the village are invited to the school to worship with the children and to lead a service.

Special services are sometimes organised at Thanksgiving and Christmas, usually in places of worship in the village, when parents, school governors, etc. are invited. A collection is made at these services towards good causes.

Opportunities are welcomed to contribute to or join in religious services organised by the church or chapel in the village.

The religious education provided is based on the Authority's agreed syllabus. A copy of this syllabus can be examined at the school. Arrangements can be made for those children whose parents do not want them to attend religious services or corresponding studies.

SCHOOL COUNCIL

Ysgol Gynradd Llandegfan strongly believes that we should give pupils their say.

Because of this, each year children from the junior department are voted to the School Council. We are also part of the Children's Commissioner For Wales' Ambassador scheme

The council meets regularly, and gives the children the opportunity to voice their opinions on matters concerning them.





Cydlynnydd ADY a Phlant sy'n Derbyn Gofal – Mr D Hood

Nodir mewn canllawiau cenedlaethol bod un disgybl ym mhob pump a chanddo Anghenion Addysgol Arbennig yn ystod ei yrfa yn y gyfundrefn addysg. Yn y cyd-destun yma mae'r ysgol yn arddel Polisi Anghenion Arbennig sydd yn seiliedig ar ofynion deddfwriaethol a Chanllawiau Gweithredu Awdurdod Addysg Môn. Y Pennaeth sydd â'r cyfrifoldeb terfynol dros y polisi a Mr Aled Williams yw Cydlynnydd Addysg Ychwanegol yr ysgol.

Rhoddir plant y mae ganddynt anghenion arbennig ar Gofrestr Anghenion Addysgol Arbennig yr ysgol. Yn ôl dwyster eu hangen fe roddir disgyblion ar ystod o gamau. Bydd y ddarpariaeth wahanol a wneir ar eu cyfer yn amrywio o gymorth yn y dosbarth, cymorth unigol neu grŵp bach tu allan i'r dosbarth, cyngor gan y Seicolegydd Addysg, cymorth arbenigol a ddarperir gan yr Awdurdod Addysg yn yr ysgol neu leoliad mewn uned ar neu oddi ar safle'r ysol. Bydd pob darpariaeth a wneir yn cael ei drafod a'i gytuno gyda rhieni cyn ei weithredu.

Ein nod fel ysgol fydd cynnig arweiniad a darpariaeth a fydd yn gweddu i anghenion eich plentyn trwy gydol ei yrfa yn yr ysgol. Os bydd unrhyw bryderon gennych ynglŷn â datblygiad eich plentyn neu weinyddiad y Polisi Anghenion Arbennig fe'ch anogir i gysylltu yn gyntaf ag athro / athrawes eich plentyn, Y Cydlynnydd Anghenion Arbennig neu gyda'r Pennaeth. Croeso i chi gysylltu â'r Pennaeth i weld copi o'r Polisi ADY.

Plant ag Anghenion Corfforol

Byddwn yn gwneud popeth o fewn ein gallu i groesawu pob plentyn, sicrhau eu diogelwch, eu galluogi i gymryd rhan yn holl weithgareddau'r ysgol a chael mynediad llawn i'r Cwricwlwm Cenedlaethol. Oherwydd pensaerniaeth arbennig yr ysgol nid yw trefniadaeth ar gyfer yr anabl yn dod yn rhwydd. Serch hyn, mae mynediad ramp ar gael i'r estyniad sydd yng nghefn yr ysgol. Fodd bynnag gwneir pob ymdrech i orchfygu problemau pe baent yn codi. Mae gennym Gynllun Hygyrchedd a Chynllun Cydraddoldeb i Bobl Anabl.

Plant dan ofal

Mr D Hood yw cydlynnydd Amddiffyn Plan a Lles Plant sy'n gyfrifol fod plant dan ofal arbennig gyda hawl lawn a chyfartal i bob agwedd ar y cwricwlwm

Meddygol

O dro i dro bydd Swyddog Meddygol a Swyddog Deintyddol yr ysgol yn ymweld â'r ysgol i archwilio'r plant. Cewch wybodaeth ysgrifenedig am yr ymweliadau hyn ac mae croeso i chi ddod efo'ch plentyn

Nyrs yr Ysgol

Bydd Mrs Luned Mason, nyrs yr ysgol yn ymweld â'r ysgol. Y prif reswm dros ei hymweliad yw sgrinio. Yn ystod eu harosiad yn yr ysgol bydd disgyblion yn cael cyfres eang o archwiliadau meddygol a gweithrediadau ataliol. Bydd rhain yn cynnwys profion ar y golwg, clyw a lliw, taldra a phwysau, archwiliad meddygol (detholedig) ac archwiliad deintyddol.

Ymwbyddiaeth o gyffuriau

O dro i dro bydd y theatr Paid â Chyffwrdd, Dweud, yn ymweld ag Ysgol Llandegfan i ddelio â'r pwnc difrifol o gyffuriau mewn dull ysgafn. Defnyddir hiwmor i alluogi ein disgyblion i wahaniaethu rhwng y cyffuriau a ddarperir iddynt gan y meddyg a chyffuriau eraill. Dysgir y ffordd iddynt ddwued na i unrhywbeth a all achosi niwed iddynt. Mae croeso i rieni fynychu. Rydym hefyd yn gwahodd Swyddog Cyswllt yr Heddlu yn flynyddol i gynnal gweithdai ynglŷn â hyn a materion eraill.

ADDITIONAL EDUCATIONAL NEEDS



Additonal Learning Needs and Looked After Children Co-ordinator - Mr D Hood

It is mentioned in national guidelines, that one pupil in every five has SEN during his school career. In this respect, the school follows a Special Needs Policy based on legislative requirements and Anglesey Education Authority Implementation Guidelines.

The Headteacher has ultimate responsibility for the policy and is the school's Additional Education Coordinator.

Children with special needs are placed on the school's SEN Register. Depending on the level of intensity of their needs, pupils are placed on a range of stages. The different provision for them varies from classroom support, individual or small group support outside the class, advice from the Educational Psychologist, specialized support provided by the LEA at the school or a placement at a unit off the school premises. Every provision will be discussed and agreed with parents prior to implementation.

The school's objective will be to provide guidance and provision that will be compatible with your child throughout his school career. If you have any concerns about your child's development or the administration of the Special Needs Policy, you are urged to please contact initially your child's teacher or the Headteacher. Contact the Headteacher if you wish to see a copy of the SEN policy.

Children with Physical Needs

We will do our utmost to welcome every child, ensure their safety, enable them to participate in all the school's activities and gain full access to the National Curriculum.

The architectural design of the school unfortunately, at this point in time, does not lend itself to easy access to all areas by disabled pupils. However, a ramp does now allow access from the back of the school to the class rooms located within the new extension. Every effort will be made to overcome any difficulties if the need arises. We believe in equal opportunities for all pupils.

We have an Accessibility Plan and Equality Plan for Disabled People.

Looked After Children

Mr D Hood, is responsible for ensuring that looked after children have full and equal access to all areas of the curriculum.

Medicals

From time to time the School Medical Officer and the school Dental Officer will visit the school and examine the children. You will be notified in writing of such visits and you will be welcome to accompany your child.

The School Nurse

The school nurse, Mrs Luned Mason, also visits the school. The main reason for her presence is screening. During their time in school pupils will undergo a comprehensive series of medical inspections and preventative procedures. These will include:---eyesight, colour and hearing tests, height and weight checks, medical examinations (selective) and dental inspections.

Drugs Awareness

From time to time, the "Don't Touch, Tell!" theatre visits Ysgol Llandegfan to deal with the serious subject of drugs in a light hearted way. Humour is used to help our pupils understand the difference between medication prescribed for them by a doctor and other drugs.

They are taught ways to say 'no' to anything that could cause them harm. We also invite a Police Liaison Officer to hold workshop regarding this and other matters each term.



Trefn Dyddiol

Mae'r sesiynau bob dydd fel a ganlyn:-

Sesiwn y bore:	Babanod	08:55 -11:55
	Iau	08:55 - 12:00
Sesiwn y prynhawn:	Babanod	01.00 - 15:05
	Iau	01.00 - 15:15

Ni ddylai'r plant gyrraedd yr ysgol cyn 8.45 a.m. (onibai eu bod yn mynd i'r Clwb Brecwast sy'n agored o 8.15 a.m. ymlaen). Dim ond o'r amser yma ymlaen y gallwn sicrhau y bydd oedolyn ar gael pe digwyddai damwain. Os gwelwch yn dda, sicrhewch fod eich plentyn yn yr ysgol erbyn 8.55 a.m.— mae prydlondeb yn arferiad da i'w feithrin. Bydd plant sydd yn cyrraedd ar ôl amser yn cael eu marcio'n 'hwyr' ar y gofrestr. Os digwydd hyn yn rheolaidd, mae rheidrwydd arnom i gysylltu â'r rhieni.

Os bwriedwch i rywun gwahanol ddod i nôl eich plentyn, mae angen i chwi adael i ni wybod trwy alwad ffôn neu nodyn. Ni allwn ddibynnu ar air plentyn, a gall camddealltwriaeth fod yn beryglus. Bydd y plant yn gadael yr ysgol 3.05 p.m. (Cyfnod Sylfaen) ac am 3.15 p.m. (CA2).

Ni fyddwn yn gollwng yr un plentyn D, B1 na B2 heb sicrhau fod rhywun i'w gyrchu adref, neu bod trefniant wedi ei wneud ymlaen llaw gyda'r rhieni. Pe digwydd i chwi fod yn hwyr, ac yn methu cyfarfod eich plentyn ar ddiwedd y dydd gofynnwn i chi ffonio'r ysgol er mwyn i ni fedru gwneud y trefniadau angenrheidiol i sicrhau diogelwch eich plentyn. Dylai pob plentyn CA2 ddychwelyd i'r ysgol a dweud wrth athro neu athrawes os nad oes neb wedi dod i'w cyfarfod

Absenoldebau

Mae gofyn statudol i ysgolion gadw cofnod manwl o bob absenoldeb plentyn. Gofynnwn i rieni gysylltu â ni cyn 9.00 a.m. os na fydd eu plentyn yn dod i'r ysgol - i sicrhau diogelwch pob plentyn sydd yn yn ein gofal ac i ni fod yn gwybod pam fod plentyn yn absennol. Yn ogystal, gofynnwn am nodyn yn hysbysu beth yw rheswm unrhyw absenoldeb gan gynnwys ymweliadau meddygol.

Mae'n bosibl caniatáu hyd at ddeg diwrnod ysgol y flwyddyn i wyliau teuluol os oes gwir angen, er fod hyn, wrth gwrs yn amharu ar addysg eich plentyn.

Presenoldeb 2016-17 = 95.3%

Presenoldeb 2017-18 = 95.5%

Targed Presenoldeb 18-19 = 96%

Mae presenoldeb a phrydlondeb yn cael ei fonitro'n wythnosol gan ysgrifennyddes yr ysgol . Fe fyddwn yn cysylltu gyda chi os oes consyrn. Mae presenoldeb yr ysgol yn cael ei fonitro yn ogystal gan Swyddog Lles yr ysgol, sef Mrs Meinir Bolton, a fydd yn cynnig cefnogaeth ychwanegol i deuluoedd sydd angen cymorth.

Gofal Bugeiliol

Rhoddir pob plentyn yng ngofal athro/athrawes arbennig, ond ceisia'r staff gyfan ymorol am les yr holl ddisgyblion. Mae'r ysgol hon yn annog plant i fod yn hunan-ddisgybledig, yn gyfrifol ac i barchu eraill. Gofynnwn i bob rhiant, (a phle'n briodol-i blant) arwyddo cytundeb cartref-ysgol, fel ein bod yn anelu at adeiladu partneriaeth gref o'r dechrau cyntaf.



The School Day

The sessions for the school day are as follows:-

Morning Session:	Infants	08:55 -11:55
	Juniors	08:55 - 12:00
Afternoon Session:	Infants	01.00 - 15:05
	Juniors	01.00 - 15:15

Children should not arrive at school before 8.45 a.m. (unless they are attending the Breakfast Club which opens at 8.15 a.m.). Only from this time onward can we guarantee that an adult will be present should an accident occur. Please ensure that your child is at school by 8.55 a.m. – punctuality is a good attribute to nurture. Children arriving after this time will be marked as ‘late’ on the register. If this happens on a regular basis, we are required to contact parents.

If you intend for someone else to collect your child from school, please let us know through a phone call or note. We cannot depend on a child’s word, and a misunderstanding could be dangerous. Children leave school at 3.05 p.m. (Foundation Phase) and at 3.15 p.m. (KS2).

We will not release any R, Y1 or Y2 child until we are satisfied that there is someone to take the child home, or that a prior arrangement has been made with the parents. Should you be late, and cannot meet your child at the end of the day, we ask you to phone the school so that we can make the necessary arrangements to ensure the child’s safety. Every KS2 child should return to the school and tell the teacher if no-one has come to fetch him/her.

Absence

Schools are legally required to keep a detailed record of all pupil absence. Parents are asked to contact us before 9.00 a.m. if their child is going to be absent from school, so as to ensure the safety of every child in our care and so that we are aware of the reasons for a child’s absence.

If totally necessary, up to ten school days annually are permitted for family holidays, although this, of course, has a disruptive impact on your child’s education.

Attendance for 2016-17 = 95.3%

Attendance 2017-18 = 95.5%

Attendance Target 18-19 = 96%

Pupil attendance and punctuality is monitored on a weekly basis by the Admin Officer. We will contact you for a meeting if we have any concerns. Our attendance is monitored on a regular basis by Mrs Meinir Bolton, the Inclusion Welfare Officer for Ysgol Llandegfan, who will provide additional support to families that require it.

Pastoral Care

Every child is placed in the care of a class teacher, but the staff as a whole endeavour to take care of all pupils’ well-being. This school urges children to be self-disciplined, to act responsibly and to respect others. We kindly ask that parents (and where suitable—pupils) to sign a Home/School agreement,



Iechyd a Diogelwch

Mae iechyd, diogelwch a lles pob unigolyn sydd naill ai yn weithiwr neu'n ddisgybl yn Ysgol Llandegfan o bwysigrwydd sylfaenol. Rydym yn anelu i ddarparu amgylchedd gweithiol diogel a dymunol i bawb. Mae'r corff llywodraethol a'r AAL yn gyfrifol am sicrhau iechyd a diogelwch disgyblion ac aelodau staff. Rhaid i bob ymwelydd ymweld â'r dderbynfa wrth gyrraedd yr ysgol. Mae pob drws allanol yn cael ei gloi yn ystod amser gwersi - ond yn caniatáu llwybr sydyn petai tân. Mae trefn mewn lle i sicrhau bod yr holl ddisgyblion yn ddiogel yn ystod y dydd. Megis :

- Ymarfer tân yn cael ei gario allan yn rheolaidd.
- Asesiadau risg cyfredol
- Mae holl offer trydanol yn cael ei brofi yn flynyddol
- Mae dŵr yr ysgol yn cael ei brofi o ran ansawdd yn rheolaidd.
- Mae cymhareb dda o oedolion i blant yn ystod amser chwarae.
- Mae ymarferwyr cymorth cyntaf ehangach ar ddylestwydd bob amser chwarae.

Meddyginiaeth

Ond gyda chaniatâd ysgrifenedig (ffurflen bwrrpasol ar gael yn yr ysgol) y gwnaiff yr aelod o staff roddi meddyginiaeth o unrhyw fath i blentyn, a hynny ond ar ôl ymgynghoriad â'r Prifathro. Nid yw'r plant i ddod ag unrhyw fath o feddyginiaeth (tabledi, ffigisig, a.y.b.) i'r ysgol.

Damweiniau

Bydd yr athrawon yn delio â damweiniau bychain. Os digwyddir damwain ddifrifol, cysylltir â'r rhieni yn ddi-oed. Mae'n bwysig felly bod gan yr ysgol rif ffôn pob rhiant fel y gallwn ei ddefnyddio mewn argyfwng. Mae'r ysgol wedi mabwysiadu trefn adrodd a'r ddamweiniau i rieni drwy yrru slip gartref yn egluro y camau mae'r ysgol wedi gymryd o dan cymorth cyntaf. Fe fydd y daflen yn cael ei gyrru garter gyda'ch plentyn.

Plis cysylltwch ar unwaith gyda'r ysgol os oes newid cyfeiriad neu rif ffôn .

Salwch

Os bydd eich plentyn yn absennol oherwydd salwch neu os bydd raid ymweld â'r deintydd neu'r ysbyty bydd angen i chi adael i ni wybod naill ai drwy anfon nodyn at yr athro/athrawes dosbarth nau adael i ysgrifenyddes yr ysgol wybod ar y ffôn. Mae hyn yn ein galluogi i wneud yn siwr nad yw unrhyw absenoldeb yn cael ei gofnodi'n anghywir, ac yn bwysicach yn eich galluogi chi i'n helpu ni i gadw'ch plentyn yn ddiogel.

Os cymerir plentyn yn wael yn ystod diwrnod ysgol, byddwn yn cysylltu â chi i ddod i'w nôl. Pe digwyddai'r sefyllfa anffodus o ddamwain yn yr ysgol, a ninnau'n methu cael gafaél ar y rhiant, eir â'r disgybl i'r ysbyty mewn car neu mewn ambiwlans, yng nghwmni aelod o'r staff.



Health and Safety

The health, safety and welfare of each individual who either works or is a pupils at Ysgol Llandegfan is very important. We aim to provide a safe and pleasant working environment to all. The Governing Board and the LEA are responsible for ensuring the health and safety of all pupils and staff. All visitors to the school **MUST** use the front door where they must wait for a member of the Reception Staff to greet them. All external doors are locked during lesson times but provide a fast escape route in the event of a fire. Procedures are in place to ensure that all pupils are kept safe whilst in our care.

For example:

- Fire drill practices are carried out, monitored and reviewed each term.
- Regular safety checks are made and our risk assessments are always under review.
- All electrical items are tested annually
- All water systems are tested for quality monthly
- During playtimes and dinner times the children are closely supervised
- Staff trained in Emergency First Aid are on duty during playtimes and dinner times.

Medicines

Only with the written consent (form available from the school) will the school administer any form of medication to a pupil, and in such cases, it will only be after prior consultation with the Headteacher.

No medication of any kind (tablets/medicine etc) will be accepted if brought to school by a child.

Accidents

Minor accidents which occur during school hours are dealt with by the staff of the school.

In the event of a pupil being involved in a serious accident, the parents will be contacted as quickly as possible. It is important therefore that the school has a telephone number which, in an emergency, can be used to contact the parents.

The school has adopted a record slip if First Aid is administered. This will be sent home with your child.

Please notify the school immediately of any change of address or telephone number.

Illness.

If your child is absent because of illness or has to attend a dental or hospital appointment you will need to let us know by either sending a note to his/her class teacher or informing the school secretary by telephone. This requirement enables us to ensure that no absences are recorded incorrectly and, most importantly, enable you to help us keep your child safe.

If a pupil becomes ill during the school day, we will contact you to collect your child. In the unlikely event of an accident at school and where the parents cannot be contacted, the pupil will be taken to hospital by car or ambulance accompanied by a member of staff.



Gwybodaeth y bydd arnom ei angen

Bydd y ffurflenni a'r wybodaeth ganlynol ar gael ar fynediad i'r ysgol:

<p><u>Cytundeb cartref ac ysgol</u> Mae copi o hon ar gael yn yr atodiad i'r ddogfen hon. Mae angen i'r rhieni ei harwyddo.</p>	<p><u>Ffurflen gwybodaeth cyswllt</u> Mae hon yn ffurflen bwysig iawn. Ni fyddwn yn derbyn disgyblion i'r ysgol oni fyddwn yn gwybod sut i gysylltu â chi os bydd argyfwng. Os byddwch yn newid eich rhif ffôn gadewch i ni wybod ar unwaith.</p>
<p><u>Ffurflen ymwybyddiaeth gyfryngol</u> Byddwn yn tynnu lluniau a gwneud ffilmiau fideo o'n disgyblion yn yr ysgol am nifer o wahanol resymau. O ganlyniad gofynnwn i chi ddarllen a chwblhau y ffurflen Ymwybyddiaeth Gyfryngol sy'n nodi'r rhesymau dros i ni gael lluniau o'ch plentyn.</p>	<p><u>Ffurflen ganiatau trafniadaeth neu ymweliad ysgol</u> Rydym yn aml yn cymryd y plant allan o dir yr ysgol i ychwanegu at eu haddysg. Ar gyfer teithiau lleol, o gwmpas y pentref, i fyny'r goedwig ayyb. (bydd hysbysu o'r bwriad ymlaen llaw) Ar gyfer unrhyw ymweliadau pellach, fe fydd gwybodaeth yn cael ei rannu mewn da bryd cyn yr ymweliad. Mae pob ymweliad ysgol yn unol ag aseiad iechyd a diogelwch manwl.</p>
<p><u>Ffurflen Alergeddau Bwyd/Arall</u> O dro i dro mae gweithgareddau ble mae disgyblion yn blasu ac yn cyffwrdd pethau amrywiol. Gofynnwn am unrhyw wybodaeth ynglyn ac alergeddau i sicrhau diogelwch y disgyblion wrth wneud gweithgareddau o'r fath.</p>	<p><u>Trefniadau Casglu Diwedd Dydd</u> Ar ddechrau'r flwyddyn addysgol gofynnwn am restr y bobl sy'n cael caniatâd i gasglu eich plentyn/plant ar ddiwedd y diwrnod ysgol.</p>

Disgyblaeth / Hyrwyddo Ymddygiad Da

Mae polisi'r ysgol ar ddisgyblaeth yn rheoli'r ffordd y disgyblir plant. Ein nod yw meithrin hunanddisgyblaeth a pharch at y gymdeithas yn gyfan yn ogystal ag at eiddo o fewn yr ysgol ac allan yn y gymdogaeth. Ceisiwn sicrhau fod rheolau'r ysgol yn syml ac yn rhesymol. Trafodir y rheolau hyn gyda'r plant a'u hannog i sylweddoli eu bod wedi eu sylfaenu ar synnwyr cyffredin ac mor rhesymol yr ydynt. Gwneir defnydd o'r Cyngor Ysgol fel fforwm i drafod a diwygio y rheolau. Disgyblir plant yn deg a chysylltir â'r cartref pan deimlwn fod angen hynny. Dim ond ar achlysuron dwys iawn yr ystyrir eithrio plant o'r ysgol. Dilyni'r canllawiau sydd ym mholisi'r ysgol. Defnyddir Amser Cylch yn yr ysgol yn aml i drafod materion yn ymwneud â disgyblaeth. Gweithredir cyfundrefn tai o fewn yr ysgol i ysgogi ac i ddisgyblu'r plant.

Mae'r ysgol hon yn annog plant i fod yn hunan-ddisgybledig ac i barchu eraill. Gwyddom y cawn gefnogaeth rhieni yn hyn. Mae pedwar tŷ i'r gyfundrefn fel a ganlyn :

Dwynwen	Glas
Deiniol	Melyn
Tegfan	Coch
Tysilio	Gwyrdd

Rheolau Ysgol / Camau Gweithredu

Rydym yn gofyn i chi ein cynorthwyo gyda rhain:

1. Dilyn cyfarwyddiadau.
2. Bod yn garedig a moesgar i eraill.
3. Rhoi eich llaw i fyny cyn siarad.
4. Cadw'r dosbarth yn daclus.
5. Gwneud eich gorau bob amser.
6. Cerdded o fewn adeilad yr ysgol.

Bydd y plant sydd yn dilyn y rheolau yma yn cael eu canmol gan yr athro/athrawes. Bydd yr un rheolau'n weithredol allan ar yr iard ac yn y Neuadd Ginio.

Mae'r ysgol yn ceisio dysgu'r disgyblion i wahaniaethu rhwng ffraeo dydd i ddydd rhwng ffrindiau a chyfoedion, a bwlio. Mae bwlio yn weithred fwrriadol a bygythiol sy'n gamddefnydd o bŵer. **Ni ddi-oddefir unrhyw fath o fwlio yn yr ysgol.** Mae canllawiau wedi'u nodi yn y Polisi Disgyblaeth ac os bydd bwlio'n digwydd yna delir â'r mater yn unol â'r canllawiau hynny.

Mae gan yr ysgol Bolisi Grym Rhesymol sydd i'w weithredu gan staff dan amgylchiadau arbennig er cynnal lefel dderbyniol o ddiogelwch.



Information that we need

The following forms and information will be provided on admission

<p><u>Home / School Agreement</u> A copy of this is provided as an appendix to this document. We require that this be signed by parents.</p>	<p><u>Contact Information Form</u> This is a very important form. We will not admit pupils to our school unless we know how to contact you in case of emergency. If you change any contact details, please inform us immediately.</p>
<p><u>Media Awareness Form</u> We take video and photographs of the pupils in our school for a variety of different purposes. As a result, we request that you read and complete the Media Awareness form identifying the purposes for which we may use images of your child.</p>	<p><u>Transport/School Visit Consent Forms</u> We often take the children out of the school grounds to enhance their education. For local destinations—around the village, to the woods and so on, we ask you to complete a permission letter. For any visits further afield, we will of course give specific detail. All school visits will be subject to a full Health and Safety check.</p>
<p><u>Food Allergies Form</u> From time to time the pupils participate in food tasting activities. We ask you to fill in a form noting any information as regards to allergies to ensure the safety of all pupils while doing activities.</p>	<p><u>End of day collection form</u> At the beginning of the academic year a consent form requesting who has permission to collect your child/children at the end of the school day is sent home.</p>

Discipline/Encouraging Good Behaviour

The school's policy on discipline governs the way in which the children are disciplined. Our aim is to nurture self-discipline and a respect towards society as a whole as well as towards property in the school and in the wider community.

We attempt to ensure that the school's rules are simple and reasonable. These rules are discussed with the children and they are encouraged to realise that they are based on common sense and to realise how reasonable they are. The School Council is used as a forum to discuss and revise the rules. Children are disciplined fairly and we will contact the home when it is felt that this is required. Only in very serious circumstances would we consider excluding children from school. We follow the guidelines contained in the school's policy. Circle Time is used frequently at the school to discuss issues involving discipline.

The school operates a House System which helps to both motivate and discipline.

The school urges children to be self-disciplined and to respect others; we know that we can rely on the parents' support in this respect

The school houses are as follows:

Dwynwen	Blue
Deiniol	Yellow
Tegfan	Red
Tysilio	Green

School Rules:

We ask that you support us with the following rules:

1. Follow instructions
2. Be kind and polite to others
3. Put your hand up before speaking
4. Keep the classroom tidy
5. Always try your best
6. Walk when inside the school.

The children who follow these rules will be praised by their teachers. The same rules apply at play-times and in the dining hall.

The school strives to teach the pupils to discriminate between day to day quarrelling between friends and peers, and bullying. Bullying represents a wilful and threatening act that is a misuse of power.

No kind of bullying is tolerated at the school. Guidelines are stipulated in the Disciplinary Policy and if any bullying occurs, the matter will be dealt with in accordance with those guidelines.

The school implements a Policy on Use of Reasonable Force that is implemented by staff under special circumstances in order to maintain an acceptable level of safety.



CYSWLLT Â'R CARTREF

Mae ar bob ysgol angen cefnogaeth rhieni. Yr ydym felly yn eich annog i ymddiddori yn addysg eich plant ac i fod yn gefn i'r ysgol yn ddyddiol ac yn ei gweithgareddau cyhoeddus. Byddwn yn gofyn i rieni a phlant, ynghyd â'r Pennaeth arwyddo Cytundeb Cartref Ysgol sydd yn nodi cyfrifoldebau a dyletswyddau'r ysgol, y rhieni a'r plentyn i sicrhau yr addysg gorau posibl a phob chwarae teg a chyfle i lwyddo i bob plentyn.

Partneriaeth – Rôl yr Ysgol

Bydd yr ysgol yn sicrhau fod:

- *Cyngor ac arweiniad ar ddatblygiad y plant yn cael ei ddarparu i rieni.
- *Datblygiad pob plentyn yn cael ei fonitro a'i drafod gyda'r rhieni yn ystod cyfarfodydd noson rhieni ac mewn adroddiad ysgrifenedig blynyddol.
- *Rhieni yn cael gwybodaeth am unrhyw anhawsterau neu broblemau sy'n amlygu eu hunain, neu sy'n amharu ar ddatblygiad addysgol plentyn.
- *Ethos ac awyrgylch yr ysgol yn hyrwyddo gallu'r plant i gyrraedd eu potensial.
- *Gwybodaeth rheolaidd am weithgareddau ysgol yn cael eu rhannu gyda'r rhieni.
- *Côd ymddygiad ac amgylchedd gofalgar wedi ei sefydlu.
- *Rhaglenni Astudio yn cyd-fynd â gofynion y Cwricwlwm Cenedlaethol ac yn addas i oedran, tueddiadau a gallu pob plentyn.

Partneriaeth – Rôl y Rhieni:

Gobeithiwn y bydd rhieni yn ein cefnogi drwy:

- *Ddeall anghenion eich plentyn tra yn yr ysgol
- *Fod yn barod i gyfathrebu gyda'r ysgol a mynychu nosweithiau rhieni'n rheolaidd.
- *Gymryd diddordeb yn y gwaith y mae eich plentyn yn ei wneud a chefnogi ei astudiaethau.
- *Rannu pryderon am addysg, iechyd neu ymddygiad eu plentyn.
- *Gefnogi côd ymddygiad yr ysgol.

Efallai y bydd adegau pan fyddwch angen cysylltu â ni i drafod plentyn - 'rydym bob amser yn falch o dderbyn galwad ffôn neu lythyr i drefnu apwyntiad cyn gynted ag y bo modd.

ASESU / ADRODD I RIENI

Mae asesu parhaus wedi bod yn rhan naturiol a phwysig o waith athrawon cydwybodol erioed. Mae hyn yn sail i baratoi gwaith addas ar gyfer eich plentyn chwi. Bydd plant Derbyn yn cael eu hasesu yn ôl canllawiau asesu y Cyfnod Sylfaen yn ystod y tymor cyntaf.

Ar ddiwedd Tymor yr Haf, byddwch yn derbyn adroddiad ysgrifenedig ar ddatblygiad eich plentyn (o D i B6). Bydd yr adroddiad yn cynnwys :

- Sylwadau ar ddatblygiad eich plentyn o fewn holl bynciau'r Cyfnod Sylfaen neu'r Cwricwlwm Cenedlaethol - Lefelau cyrhaeddiad eich plentyn yn y pynciau craidd (Cymraeg, Mathemateg a Datblygiad Personol) ar ddiwedd B2, (Cymraeg, Saesneg, Mathemateg a Gwyddoniaeth) ar ddiwedd B6
- Cymariaethau rhwng canlyniadau eich plentyn (B12 a B16) gyda chanlyniadau cyfartalog cenedlaethol.
- Gwybodaeth am sgoriau profion darllen/rhifedd eich plentyn
- Sylwadau gan yr athro/athrawes ar agwedd, ymddygiad a datblygiad cyffredinol
- Cofnod o bresenoldeb y plentyn yn ystod y flwyddyn.
- Argymhellion i'r plentyn a'r rhieni.
- Dyddiad ac amser i drafod yr adroddiad.
- Dyddiad agor yr ysgol ym mis Medi.
- Caiff copi o'r adroddiad ei gadw yn yr ysgol.

Cynhelir Nosweithiau Rhieni gyda apwyntiadau dwy waith y flwyddyn. Rhydd hyn gyfle i rieni drafod datblygiad eu plant gyda'r athro/athrawes ddosbarth. Cynhelir noson rieni agored yn Nhymor yr Haf yn ogystal yn dilyn dosbarthu'r adroddiad fel bod modd i rieni drafod adroddiad eu plentyn gyda'r athro/athrawes os dymunant. Cwblheir asesiadau athrawon ar ddiwedd pob blwyddyn addysgol. Yn ôl rhaglen y Cwricwlwm Cenedlaethol bydd disgyblion B2 yn cael asesiad mwy ffurfiol ar ddiwedd y Cyfnod Sylfaen a'r un modd i ddisgyblion B6 ar ddiwedd CA2. Bydd adroddiad llawn o lefel o gyrhaeddiad disgyblion yn B2 a B6 yn y pynciau craidd yn cael ei baratoi ar gyfer rhieni erbyn diwedd y flwyddyn addysgol. Mae'r ysgol yn gweithredu polisi drw agored.



LINKS WITH THE HOME

No school can succeed without the support of parents. We therefore urge you to take an interest in your children's education and to support the school in its everyday work and its public activities. We will ask parents and children, together with the Headteacher, to sign a Home School Agreement denoting the responsibilities and duties of the school, the parents and the child, so as to ensure the best possible education and every opportunity for the child to receive fair play and to succeed.

Partnership – the School's Role

The school will ensure that:

- advice and guidance on the children's development is provided to parents.
- the development of every child is monitored and discussed with parents during parents' evening meetings and in an annual written report.
- parents are informed of any difficulties or problems that arise, or which impair the child's educational progress.
- the school's ethos and atmosphere promote the children's ability to reach their full potential.
- regular information about school activities is shared with parents.
- a code of behaviour and caring environment is established.
- Programmes of Study conform to the requirements of the National Curriculum and are suited to the age, aptitudes and ability of every child.

Partnership – the Parents' Role:

We hope that parents will support us by:

- understanding the needs of their child while at school.
- being prepared to communicate with the school and attend parents' evenings regularly.
- taking an interest in their child's work and supporting his/her studies.
- sharing concerns about the education, health or behaviour of their child.
- supporting the school's code of behaviour.

There may be times when you will need to contact us to discuss your child – we are always pleased to receive a phone call or letter to arrange an appointment as soon as possible.

ASSESSING/REPORTING TO PARENTS

Continuous assessment has always been a natural and important part of the work of conscientious teachers. This is the basis for preparing suitable work for your child. Reception children will be assessed according to Foundation Phase assessment guidelines during the first term.

At the end of the Summer Term, you will receive a written report on your child's development (from R to Y6). The report will contain:

- comments on the development of your child within all Foundation Phase or National Curriculum subjects.
- your child's levels of attainment in the core subjects (Welsh, mathematics and personal development) at the end of Y2, (Welsh, English, mathematics and science) at the end of Y6.
- comparisons between the results of your child (Y2 and Y6) and national average results.
- information on your child's reading/numeracy tests scores.
- comments from the teacher on attitude, behaviour and general development.
- a record of your child's attendance during the year.
- recommendations for the child and parents.
- a date and time at which to discuss the report.
- the date on which the school opens in September.
- A copy of the report will be retained at the school.

Parents' Evenings are held twice a year. This gives parents the opportunity to discuss their children's development with the class teacher. A open evening is held in the Summer Term following the distribution of the report so as to allow parents the opportunity to discuss their child's report with the teacher. Teacher assessments are completed at the end of every school year. In accordance with the National Curriculum programme, Y2 pupils will receive a more formal assessment at the end of the Foundation Phase and this is also the case for Y6 pupils at the end of KS2. A full report of the level of attainment of Y2 and Y6 pupils in the core subjects will be prepared for parents by the end of the school year.



CINIO YSGOL

Anogir pob disgybl i gymryd prydau ysgol ar ddechrau'r dosbarth Derbyn.

Mae'r bwyd a ddarperir yn arlwy cytbwys ac iach. Os oes gan eich plentyn alergedd at fathau gwahanol o fwyd dylid cynnwys y wybodaeth ar ffurflen fynediad eich plentyn neu drwy gysylltu â'r Pennaeth.

Bydd y wybodaeth yn cael ei drosglwyddo i'r gogyddes. Mae'r plant i gyd yn bwyta o dan arolygaeth yn y neuadd.

Mae bwydlen ar gael o'r ysgol sy'n nodi beth sydd yn cael ei baratoi fel cinio yn ddyddiol.

Os nad ydych am i'ch plentyn gael cinio ysgol, gall ddod a phecyn bwyd i'r ysgol.

Mae'r plant i gyd yn bwyta o dan arolygaeth yn y neuadd. Ceisiwch sicrhau bod cynnwys y bocs yn cydymffurfio i'n polisi Ysgol Iach h.y. dim diod siol, dim da-da, dim llawer o bethau melys.

Alergedd / Anghenion Arbennig

Petai eich plentyn angen diet arbennig, neu petai unrhyw fwyd angen cael ei osgoi, rydym yn gofyn yn garedig i chi adael i gogyddes yr ysgol, Mrs Margaret Hughes, wybod drwy lythyr. Mi fydd yn fwy na pharod i addasu'r bwydlen ar gyfer anghenion y plentyn. Gallwch wneud apwyntiad i drafod hyn ymhellach drwy gysylltu â swyddfa'r ysgol. Os yw eich plentyn yn cyrraedd yn hwyr, byddwn yn ddiolchgar petai chi yn gadael i'r swyddfa wybod os yw angen cinio.



Costau Cinio ysgol

Adran	Dyddiol	Wythnosol
Cyfnod Sylfaen (Derbyn—Blwyddyn 2)	£2.40	£12.00
Cyfnod Allweddol 2	£2.40	£12.00

Talu.

Os gwelwch yn dda a wnewch chi sicrhau bod arian cinio yn cael ei dalu o flaen llawn a gan ddefnyddio SchoolGateway neu nodwch ar amlen:

- “Arian Cinio”
- Enw eich plentyn
- Dosbarth eich plentyn
- Y swm o arian oddi mewn

Cinio am ddim

Pan fydd eich plentyn yn dechrau addysg lawn amser, efallai y byddwch yn gymwys am ginio am ddim. I fod yn gymwys rhaid cael:

- Income based Jobseekers Allowance
- Income Support
- Child Tax Credits (if income less than £16,190)

Rydym yn annog pob rhiant sydd yn tybio eu bod yn gymwys i dderbyn cinio i holi yn y swyddfa budd-dal.

Clwb Brecwast/Gofal

Mae'r ysgol yn rhedeg clwb gofal a brecwast poblogaidd. Mae'r brecwast yn rhad ac am ddim a bydd y drysau yn agored o 8:25 hyd 8:40. Mae clwb gofal ar gael o 08:00 am gost o £1 y dydd. Am ragor o fanylion cysylltwch â'r ysgol.

Bwyta'n Iach

Anogir plant i ddod a ffrwyth i'w fwyta yn ystod amser egwyl. Darperir dŵr yfed ym mhob adran ond croeso i'r plant ddod a photeli dŵr hefyd.

Siop Ffrwyth

Mae 'Siop Ffrwyth' yr ysgol ar agor yn ddyddiol. Caiff y siop ei rhedeg gan y dosbarthiadau a cost ffrwyth y dydd yw 20c



School Lunches

All pupils are encouraged to take school meals from the start of their period in the Reception class. The food provided is a balanced and healthy diet. If your child is allergic to various kinds of food, the information should be included on your child's admissions form or through contacting the Headteacher. The information will be transferred to the cook. All the children eat under supervision at the hall.

A school menu is sent home at the beginning of the year noting what meals are prepared daily.

Packed Lunches

If you do not wish your child to receive school dinner, he/she can bring a packed lunch to school. The children all eat under supervision in the hall. Please ensure that the contents of lunch boxes complies with our Healthy School policy i.e. no fizzy drink, no sweets, not too many sweet things.

Allergies / Specific Needs

Should a special diet be required for your child or if certain foods are not to be eaten, please notify the school cook, Mrs Margaret Hughes, in writing. She will be happy to accommodate your wishes. You can make an appointment to discuss your child's needs with her by contacting the school office.

If your child arrives after registration, we ask that you notify the school Admin Officer if a school dinner is required.



School Dinner Cost

Department	Daily	Weekly
Foundation Phase Reception—Year 2	£2.40	£12.00
Key Stage 2	£2.40	£12.00

Payment

Could you please ensure that all dinner money is paid in advance using School Gateway or in a sealed envelope, clearly marked with:

- "Dinner Money"
- Your child's name
- Your child's class
- The amount of cash enclosed

Free School Meals

When your child enters full time education, you may be eligible to Free School Meals. To qualify you must claim:

- Income based Jobseekers Allowance
- Income Support
- Child Tax Credits (if income less than £16,190)

We encourage all parents who are entitled to claim to check with the Benefits Office.

Breakfast/Care Club

The school runs a popular and nutritional care and breakfast club. There is no charge for breakfast at the school. Doors will open at 8.25 until 8.40. A care club is available from 08:00 at a cost of £1 a day. For further detail contact the school.

Healthy Eating

Children are not allowed to bring sweets and fizzy drinks with them to school. Children are encouraged to bring fruit, and milk is supplied daily for the Infant classes. Water fountains are available throughout the school and children are welcome to bring water bottles also.

Fruit Shop

A 'Fruit Shop' is open in school daily. The shop is run by the classes and cost of fruit is 20p per day.



TREFN CWYNO

Mae'r Awdurdod Addysg Lleol, yn unol â gofynion yr Ysgrifennydd Gwladol, dan Adran 23 o Ddeddf Diwygio Addysg 1980, wedi sefydlu trefn i ystyried cwynion am y modd mae cyrff llywodraethu'r ysgolion a'r Awdurdod Addysg yn gweithredu mewn perthynas â chwricwlwm ysgol a materion eraill cysylltiedig. Mae'r drefn hon wedi ei hamlinellu mewn dogfen bwrpasol yn y Gymraeg a Saesneg sydd ar gael yn yr ysgol.

Darperir copi'n rhad ac am ddim, yn ôl y gofyn, i unrhyw rieni sy'n dymuno gwneud cwyn dan y trefniadau hyn, a gall yr Awdurdod ddarparu copi mewn iaith heblaw'r Gymraeg â'r Saesneg os bydd hynny'n angenrheidiol. Pwysleisir, fodd bynnag, y gellir ymdrin â llawer o gwynion yn gyflym ac effeithiol drwy ystyriaeth anffurfiol yn seiliedig ar drafodaethau gyda'r Pennaeth. Hwn yw'r cam rhesymol cyntaf, a bydd y Corff Llywodraethu'n disgwyl bod y cam wedi ei gyflawni cyn cyflwyno'r gwyn yn ffurfiol mewn achosion eithriadol.

Dylid cysylltu â'r ysgol i wneud apwyntiad i drafod unrhyw gwyn gyda'r Pennaethiaid adran yn gyn- taf ac yna'r Pennaeth.

DOGFENNAU

Mae gennych hawl os y dymunwch, i wneud cais i'r ysgol i gael golwg ar nifer o ddogfennau megis Cylchlythyrau Cynulliad Cymru, Polisiau yr Awdurdod Addysg, Polisiau a Nodau Cwricwlaidd y Corff Llywodraethu, adroddiadau Estyn ar yr ysgol, meysydd llafur a chynlluniau gwaith a'r adroddiad blynyddol i rieni.

TYWYDD GARW

Os bydd eira mawr / tywydd garw, byddwn yn eich hysbysu os fydd yr ysgol yn cau drwy neges tes- tun, neu ceisiwch gysylltu â'r ysgol cyn 9.00 a.m. Os daw'n eira trwm yn ystod y dydd, byddwn yn cysylltu â chwi, neu yn sicrhau fod rhywun gartref cyn gadael unrhyw blentyn adael tir yr ysgol.

CODI TÂL AM WEITHGAREDDAU ADDYSGOL

Yn unol â Ddeddf Addysg 1988 mae gweithgareddau'r ysgol, a gynigir i ddisgyblion yn ystod oriau'r ysgol, ar gael i bawb yn ddiwahan yn ddi-dâl. Fodd bynnag, rhoddir hawl i'r Awdurdod Addysg Lleol neu'r ysgol ddethol fel y gallant godi tâl am weithgareddau ychwanegol os dymunant hynny, e.e. gwersi offerynnol, gweithgareddau cwricwlaidd.

Bydd yr ysgol, hefyd, yn gofyn am gyfraniadau gwirfoddol er budd yr ysgol neu gefnogi/rhoi cy- morth i unrhyw weithgaredd a drefnir gan yr ysgol, boed yn ystod neu du allan i oriau'r ysgol. Eglu- rir wrth y rhieni beth yw cost gweithgaredd megis taith addysgol. Os na lwyddir codi'r swm hwnnw trwy gyfraniadau gan rieni yna, y bydd rhaid canslo'r gweithgaredd. Gweler ddiwedd y llawlyfr am grynodedeb o'r polisi.

CODI TÂL AM DDIFROD

Os difrodir eiddo'r ysgol yn fwriadol gan blentyn yna, gall yr ysgol godi tâl ar y rhieni am y difrod hwnnw.

IECHYD A DIOGELWCH

Mae lechyd a Diogelwch yn faes pwysig iawn yn yr ysgol am resymau amlwg.

Mae asesiadau risg cyson yn cael eu cynnal mewn amryw o feysydd yn yr ysgol mewn ymgais i geisio adnabod peryglon posibl.

Mae asesiadau risg yn cael eu cynnal hefyd cyn mynd ar unrhyw daith addysgol .

CYFLEOEDD CYFARTAL

Prif athroniaeth ac amcanion yr ysgol yw bod gonestrwydd, urddas a gwerth pob unigolyn o'r pwysigrwydd mwyaf. Ymdrechir i roi cyfle cyfartal i bob disgybl ac athro/athrawes ar bob adeg heb wahaniaethu ar sail rhyw, crefydd, lliw, iaith ac anabled.



COMPLAINTS PROCEDURE

The Local Education Authority, in accordance with the requirements of the Secretary of State, under Section 23 of the Education Reform Act 1980, has established a procedure to consider complaints concerning the way schools' governing bodies and the Education Authority operate in relation to the school curriculum and other related matters. This procedure is outlined in a relevant document, in both Welsh and English, which is available at the school. A copy can be provided free of charge, as required, to any parents wishing to lodge a complaint under these arrangements, and the Authority can provide a copy in a language other than Welsh and English if required. It is emphasised, however, that many complaints can be dealt with swiftly and effectively through an informal consideration, based on discussions with the Headteacher. This is the first logical step and the Governing Body would expect that this step would have been taken before formally submitting the complaint in exceptional cases.

An appointment should be made to discuss any complaint with the Heads of Department firstly and then Headteacher by contacting the school.

DOCUMENTATION

You are entitled, if you wish, to apply to the school to take a look at a number of documents such as Welsh Assembly Circulars, the Policies of the Education Authority, the Governing Body's Curricular Policies and Aims, Estyn reports on the school, syllabuses and schemes of work and the annual report to parents.

BAD WEATHER

In the event of heavy snow, and the school will be closed we will contact parents using the text messaging service or please try to contact the school before 9.00 a.m. If there is heavy snowfall during the day, we will contact you, or will ensure that someone is at home before a child is allowed home.

CHARGING PAYMENT FOR EDUCATIONAL ACTIVITIES

In accordance with the Education Act 1988, school activities offered to pupils during school hours are available to all without exception, free of charge. The Education Authority or school is, however, entitled to choose to charge payment for additional activities if they wish, e.g. musical instrument lessons, curricular activities. The school will also request voluntary payments for the benefit of the school or to support/assist any activity organised by the school, whether during or outside school hours. The cost of an activity such as an educational visit will be explained to parents. Unless that sum is raised through parents' contributions, the activity may have to be cancelled. See the end of the handbook for a summary of the policy.

CHARGING PAYMENT FOR DAMAGE

If school property is intentionally damaged by a child, the school may charge the parents payment for that damage.

HEALTH AND SAFETY

Health and safety is an important issue at the school for obvious reasons. Regular risk assessments are carried out on various aspects at the school in an attempt to identify possible risks. Risk assessments are also carried out before embarking on any educational visit.

EQUAL OPPORTUNITIES

The school's principal philosophy and aims is to attach the highest importance to the integrity, dignity and value of each individual. An effort is made to ensure that every pupil and teacher has an equal opportunity at all times without discrimination on grounds of gender, religion, language and disability.



GORUCHWYLIO

Ein nod yw sicrhau diogelwch y plant a chadw safon dderbyniol o drefn a rheolaeth.

Mae'r ysgol yn gweithredu trefniadau goruchwylio plant gan yr athrawon a'r gweinyddesau yn ystod y cyfnodau isod:

- Cyn dechrau'r ysgol (8.45 – 8.55)
- Egwyl y bore
- Egwyl y prynhawn
- Diwedd y prynhawn (3.05 neu 3:15)

a) Trefniadau Tywydd Sych

Gweithredir y goruchwylio drwy system rota dyddiol. Bydd y staff ar ddyletswydd yn goruchwylio'r buarth drwy gydol y cyfnod. Gwneir trefniadau i gyflenwi pan fo aelod o staff yn absennol.

b) Trefniadau Tywydd Garw

Ar gyfnodau o dywydd garw, yr athrawon dosbarth fydd yn gyfrifol am baratoi gweithgaredd i'r plant a'r staff ar ddyletswydd i'w goruchwylio yn ystod yr egwyl.

c) Trefniadau Amser Cinio

Goruchwylir plant gan dair oruchwylwraig. Ar ôl i'r plant orffen bwyta, mae'r goruchwylwyr yn mynd allan gyda'r plant ac yn eu goruchwylio ar y buarth hyd amser dod i mewn. Yn ystod tywydd garw, byddant yn goruchwylio'r plant yn eu dosbarthiadau.

GADAEL YR YSGOL

Dylai'r rhieni ddod i gyfarfod y plant ar iard yr ysgol a bydd yr athrawon yn eu danfon yn ddiogel drwy ddrws ochr y Neuadd. Os digwydd i riant fod yn hwyr yn dod i nôl plentyn, bydd yr athrawes yn mynd ag ef yn ôl yn ddiogel i'r dosbarth. Gofynnir i rieni sy'n hwyr ddod i mewn i'w nôl.

Yn naturiol, nid oes hawl gan blentyn o'r Cyfnod Sylfaen i adael tir yr ysgol heb ganiatâd a heb oedolyn i'w gyrchu. Cofiwch roi gwybodaeth i ni yn yr ysgol, yn ogystal ag i'ch plentyn, os bydd unrhyw newid yn y trefniadau arferol ar gyfer codi plant o'r ysgol. Pan fydd teuluoedd yn chwalu, ac un o'r rhieni'n cael gofal dros y plant, mae'n bwysig ein bod yn cael gwybod am y trefniadau er mwyn osgoi sefyllfa annifyr.

Ni ellir gadael i blentyn fynd o'r ysgol yn gynnar oni bai fod rhiant yn dod i'w nôl neu fod cais ysgrifenedig yn cael ei dderbyn yn gofyn i ni anfon y plentyn adref ar amser penodol.

Daw diwedd i ddiwrnod ysgol yn y Cyfnod Sylfaen am 3:05 ac am 3:15 yn Cyfnod Allweddol 2.

Nid oes unrhyw blentyn i adael libart yr ysgol yn ystod amser ysgol heb gais personol gan y rhieni iddo/iddi gael gwneud hynny, neu ar gais y pennaeth.

TYNNU LLUNIAU / Fideos

Yn achlysurol bydd lluniau yn cael eu tynnu o'r plant yn cymryd rhan mewn gweithgareddau gyda'r ysgol. Gall rhai o'r lluniau yma gael eu rhoi yn y papurau newydd, eu cynnwys mewn cyhoeddiadau neu ar safleoedd gwe'r ysgol, Cyngor Môn neu sefydliadau eraill y byddwn yn cydweithio â nhw.

Os nad ydych am i'ch plentyn gael ei chynnwys/gynnwys mewn lluniau cyffelyb, a fyddech cystal ag ysgrifennu llythyr at y pennaeth i nodi hynny. Os na dderbynnir llythyr cymerir yn ganiataol nad oes gennyh wrthwynebiad.

(Ar ddechrau cyfnod eich plentyn yn yr ysgol fe ofynnir i lenwi ffurflen caniatâd tynnu lluniau sydd mewn grym tra fod eich plentyn/plant yn mynychu'r ysgol.)



SUPERVISION

Our objective is to ensure the children's safety and ensure a satisfactory standard of order and control.

The children are supervised by teachers and assistants during the following periods:

- Before school begins (8.45– 8.55)
- Morning break
- Afternoon break
- At the end of the afternoon (3:05 or 3:15)

a) Arrangements during Dry Weather

Supervision is through a daily rota system. The on duty staff supervises the playground all the time. Supply arrangements are made when a staff member is absent.

b) Arrangements during Severe Weather

During periods of severe weather, it will be the class teacher's responsibility to prepare an activity for the children with the staff being on duty to supervise them during break time.

c) Dinner time arrangements

Children are supervised by three supervisors. After the children have finished eating, lunch time supervisors supervise pupils on the playground until it is time to come indoors. During severe weather, children are supervised in their classes.

LEAVING SCHOOL

Parents should meet the children on the school yard and the teachers will escort them there safely through the hall's side door.

Should a parent happen to be late collecting a child, the teacher will escort him/her safely back to the classroom. Parents who arrive late are asked to come in to collect the child.

Of course, a Foundation Phase child is prohibited from leaving the school premises without permission and without an adult to collect him/her.

Please remember to notify us at the school, as well as your child, if there are any changes in the usual arrangements for picking up children from school. When families split up, and one of the parents has custody of the children, it is important that we are notified of the arrangements so as to avoid an unpleasant situation.

A child cannot leave the school early unless a parent comes to collect him or that a written request has been received requesting that we send the child home at a specific time.

No pupil are allowed to leave the school grounds during the school day, without a personal request from the parents.

PHOTOGRAPHS / Videos

Occasionally, photographs will be taken of the children participating in activities with the school. Some of these photos may appear in the newspapers, in publications or on the school's web-sites, Anglesey Council or other establishments with whom we collaborate.

If you do not wish your child to appear in similar photos, please inform the head teacher in writing. If a letter is not received, it will be assumed that you have no objection.

(At the beginning of your child/children's time here at Ysgol Llandegfan a photograph consent form is available. The form will be in place for your child's duration at the school.)



ADDYSG RHYW A PHERTHNASOEDD

Cyflwynir addysg rhyw a pherthnasoedd fel rhan o addysg bersonol, gymdeithasol a moesol y plentyn fel bod rhywioldeb yn cael ei adnabod fel priodwedd naturiol a chyffredin i bawb gan, ar yr un pryd, sylweddoli bod iddo oblygiadau personol, cymdeithasol a moesol. Mae addysg rhyw hefyd yn rhan o'r cwricwlwm Gwyddoniaeth.

Fe ymdrinnir â'r maes mewn ffordd sensitif a synhwyrol. Mae gan rieni hawl i eithrio eu plant o wersi addysg rhyw ffurfiol a gwneir pob ymdrech rhesymol i barchu'r hawl hwnnw. Am wybodaeth bellach dylid cysylltu â'r Pennaeth. Gellir gweld copi o'r Polisi yn yr ysgol. Os nad yw rhieni'n fodlon i'w plant dderbyn gwybodaeth am addysg rhyw, dylid cysylltu â'r Pennaeth.

ADDYSG GORFFOROL

Mae'r ysgol mewn partneriaeth â'r cartref, yn gyfrifol am ddatblygiad corfforol pob plentyn, yn ogystal â'i ddatblygiad addysgol a moesol. Felly, cynhelir gwersi Addysg Gorfforol yn rheolaidd i'r Cyfnod Sylfaen a'r Adran Iau yn neuadd yr ysgol, ar y buarth neu ar y cae. Bydd plant yr Adran Iau yn manteisio ar gyfnod o nofio yn ogystal yn ystod y flwyddyn.

Ein nod yw datblygu cryfder, rheolaeth ac esthetrwydd y plant trwy eu cael i fod yn gorfforol weithgar. Byddant hefyd yn cael cyfleoedd i weithio'n annibynnol a chyd-weithio ag eraill ac i lunio a rheoli gemau eu hunain.

Yn ddibynnol ar y wers, disgwylir i'r plant wisgo dillad priodol. Golyga hyn newid o'i gwisg ysgol i drowsus cwta a chrys T ar gyfer y gampfa. Mae trowsus loncian, crys T, crys chwys, treinar neu stÿds yn addas ar gyfer gwersi tu allan. Os yw plentyn yn anghofio ei ddillad addysg gorfforol disgwylir iddo/iddi ddefnyddio dillad sbâr o'r ysgol. Gwnewch yn siŵr fod enw eich plentyn ar bob dilledyn os gwelwch yn dda. Ni chaniateir gwisgo modrwyau, clustdlysau nag oriawr mewn unrhyw wers Addysg Gorfforol.

Mae Addysg Gorfforol yn rhan bwysig o'r Cwricwlwm ac yn statudol i bob plentyn. Os oes unrhyw reswm meddygol pam na all plentyn gymryd rhan mewn gwersi Addysg Gorfforol, gofynnir yn garedig i'r rhieni hysbysu'r ysgol yn ysgrifenedig. Hysbysir pob disgybl ar ddechrau'r flwyddyn ar ba ddiwrnod y caiff gwersi Addysg Gorfforol.

Cefnogir cystadlaethau dalgylchol a sirol pêl-droed, pêl-rwyd, rygbi, athletau a chyfeiriannu. Yn ogystal cynhelir mabolgampau ysgol yn flynyddol. Cynhelir sawl Gala Nofio yn ystod y flwyddyn. Caiff pob disgybl ym Mlynnyddoedd 1 i 6 gyfle yn ystod y flwyddyn addysgol i gyfres o wersi nofio, ym Mhwl Nofio Bangor neu Llangefni. Fe'ch hysbysir mewn da bryd pan fydd eich plentyn yn mynychu. Mae'r gwersi'n rhan o weithgareddau'r ysgol, ac fe ddisgwylir i bob disgybl fynychu'r gwersi. Gofynnir i'r rhieni hysbysu'r athro dosbarth drwy lythyr, os na fydd eu plentyn yn mynychu. Gofynnir yn garedig i'r rhieni gyfrannu tuag at gost cludiant.

GWISG YSGOL

Mae gan yr ysgol hon wisg ysgol swyddogol ac anogir chwi i ddilladu eich plant yn y canlynol:

<i>Bechgyn</i>	<i>Genethod</i>
<ul style="list-style-type: none">• Crys/Crys polo glas golau (gyda logo)• Crys chwys glas tywyll (gwddf crwn neu wddf 'V') (gyda logo)• Cardigan glas tywyll• Trowsus glas tywyll neu lwyd/• Byrion/Siorts glas tywyll, du neu lwyd, plaen – Tymor yr Haf• Esgidau du	<ul style="list-style-type: none">• Blows/Crys polo glas golau (gyda logo)• Crys chwys glas tywyll (gwddf crwn neu wddf 'V') (gyda logo)• Cardigan glas tywyll• Trowsus glas tywyll neu lwyd• Sgert (i'r pen-glin), ffrog pinafore neu culottes glas tywyll, du neu lwyd• Ffrog 'Gingham Glas /Gwyn – Tymor yr Haf• Teits du, llwyd neu las tywyll• Byrion/Siorts glas tywyll, du neu lwyd, plaen – Tymor yr Haf• Esgidau du

Gellir prynu'r rhain mewn nifer o siopau lleol.

Gwnewch yn siŵr bod enw eich plentyn ar bob un dilledyn os gwelwch yn dda.

(Mae copi o bolisi gwisg ysgol ar gael o'r ysgol ar gais)



SEX EDUCATION AND RELASIONSHIPS

Sex education and relationships is presented as part of the child’s personal, social and moral education so that sexuality is recognized as a natural and common attribute to everybody whilst, at the same time, recognizing that it has personal, social and moral implications. Sex education also forms part of the Science curriculum. The subject is sensitively and sensibly handled. Parents are entitled to withdraw their children from formal sex education lessons and that right is respected as far as is reasonably possible. For further information, please contact the Headteacher. A copy of the Policy is available at the school. If parents are unwilling for their children to receive information on sex education, the Headteacher should be contacted.

PHYSICAL EDUCATION

The school, in partnership with the home, is responsible for every child’s physical development, as well as his educational and moral development. Therefore, PE lessons are regularly held for the Foundation Phase and the Junior Department in the school hall, on the playground or on the field. The Junior Department also attend swimming lessons during the year.

Our objective is to develop the children’s stamina, control and aestheticism through getting them to be physically active. They will also have opportunities to work independently and collaborate with others and to devise and regulate games themselves.

Depending on the lesson, children are expected to wear suitable clothing. This involves changing from school uniform to shorts and Tee-shirt for gymnasium activities. Jogging trousers, Tee shirt, sweatshirt, trainers or studs are appropriate for outdoor lessons. If a child forgets to bring PE clothing, he/she is expected to wear spare clothing from the school. Please ensure that your child’s name is labelled on every item of clothing. The wearing of rings, ear-rings or watch during a PE lesson is prohibited.

PE forms an important aspect of the Curriculum and is a statutory requirement for every child. If there are medical grounds that prevent a child from participating in PE lessons, parents are kindly requested to notify the school in writing. All pupils are notified at the start of the year on which day PE lessons are held. Football, netball, rugby, athletics and orienteering catchment-area and county-based competitions are supported. Annual school sports are also held. Several Swimming Galas are held during the year.

All pupils from Year 1 to Year 6 have an opportunity during the school year to attend a series of swimming lessons, held at the Bangor or Llangefni Swimming Pools. You will be notified in good time when your child will attend. The lessons form part of the school’s activities, and every pupil is expected to attend the lessons. Parents are asked to notify the class teacher by letter, if their child will not be attending. Parents are kindly requested to contribute towards transport cost.

SCHOOL UNIFORM

The school has an official school uniform and we encourage all parents to cloth their children as follows

Boys	Girls
<ul style="list-style-type: none"> • Light blue polo shirt / shirt (with logo) • Navy blue sweatshirt (round neck * or ‘V’ neck *) (with logo) • Navy blue cardigan • Navy or grey trousers • Navy, Black or grey shorts (plain) – Summer term • Black shoes 	<ul style="list-style-type: none"> • Light blue polo shirt / blouse (with logo) • Navy blue sweatshirt (round neck * or ‘V’ neck *) (with logo) • Navy blue cardigan • Navy or grey trousers • Navy, Black or grey skirt (knee length), pinafore dress or culottes • Blue/white gingham dress - Summer term • Black, white, grey or navy tights • Navy, Black or grey shorts (plain) – Summer term • Black shoes

School uniform items can be bought from a number of local shops.

Please ensure that your child name is written on all items of clothing please.

(A copy of the schools uuniform policy is available on request from the school)



CANLLAWIAU AMDDIFFYN PLANT

Mae pob aelod o staff yr ysgol yn gyfrifol am ddiogelu ac amddiffyn y plant sy'n ei mynychu. Os ceir pryderon ynglŷn ag esgeulustra neu gam-drin corfforol, emosiynol neu rywiol, yna mae'n ddyletswydd ar y staff, yn unol â Threfn Diogelu Plant y Sir, i sôn am y mater wrth Gyd-gysylltydd Diogelu Plant yr ysgol.

Gall cyd-gysylltydd yr ysgol ymgynghori â chydweithwyr proffesiynol yn ogystal ag asiantaethau perthnasol megis Gwasanaethau Iechyd a Chymdeithasol. Yn dilyn trafodaethau, efallai y bydd rhaid i gyd-gysylltydd yr Ysgol gyfeirio'r plentyn yn swyddogol i'r Adran Gwasanaethau Cymdeithasol, yn unol â phrotocol y sir. Yr Adran Gwasanaethau Cymdeithasol sy'n penderfynu a oes angen gweithredu neu beidio. Oblegid natur y cyhuddiadau, ni fydd bob amser yn briodol i drafod y materion gyda'r rhieni cyn cyfeirio'r plentyn. Y Gwasanaethau Cymdeithasol a'r Heddlu sy'n gyfrifol am ymchwilio i gyhuddiadau. Y Pennaeth yw'r Cyd-Gysylltydd Diogelu Plant.

CANLLAWIAU AMDDIFFYN PLANT YR YSGOL

Fel rhan o'r gyfundrefn amddiffyn plant, mae gan bob ysgol athrawon a staff ategol yr ysgol hon ddyletswydd i adnabod arwyddion o gamdriniaeth neu esgelustod posibl a chyfeirio'u pryderon at y personau cyfrifol yn yr ysgol neu'r Gwasanaethau Cymdeithasol yn syth.

Pryderu am blentyn: Y Personau Cyfrifol am Amddiffyn Plant yn Ysgol Llandegfan yw:
Mr D Hood— PENNAETH (01248 713431)

Person Cyfrifol Amddiffyn Plant : Cyngh Carwyn Jones (Cadeirydd y Llywodraethwyr)



CHILD PROTECTION GUIDELINES

Every member of school staff has responsibility for protecting and safeguarding the children who attend. If there are concerns about negligence or physical, emotional or sexual abuse, then the staff has an obligation, in compliance with the County's Child Protection procedure, to mention this to the School Child Protection Co-ordinator.

The school co-ordinator can consult with professional colleagues as well as relevant agencies such as Health and Social Services. Following discussions, the School co-ordinator may have to officially refer the child to Social Services Department, in compliance with the county protocol. The Social Services Department decides whether or not action is required. Due to the nature of the allegations, it will not always be possible to discuss the matters with the parents prior to referring the child. The Social Services and Police are responsible for investigating allegations. The Headteacher is the Child Protection Co-ordinator.

SCHOOL CHILD PROTECTION GUIDELINES

As part of the child protection procedure, every school, teachers and support staff at this school have an obligation to identify signs of possible abuse or negligence and have those concerns immediately referred to the responsible persons at the school or Social Services.

Concern about a child:

The Persons Responsible for Child Protection at Ysgol Llandegfan are:

Mr D Hood - HEADTEACHER (01248 713431)

Responsible Person : Child Protection : Cyngh Carwyn Jones (Chair of Governors)



Arian



ARIAN POCED / PETHAU GWERTHFAWR

Ni ddylai plant ddod ag arian i'r ysgol os nad oes wir angen hynny arnynt. Os digwydd hynny, gofynnir iddynt roi'r arian neu bethau gwerthfawr personol eraill i'r athro Dosbarth. Os yw plant yn dod ag arian i dalu am drip ayb gofynnwn iddo gael ei roi mewn amlen seliedig gyda enw'r plentyn yn amlwg arno.

Addysg Gorfforol



Rhaid i'r plant wisgo'n addas ar gyfer eu gwersi yn y neuadd - trowsus cwta yn unig i'r bechgyn a throwsus cwta a chrys-T i'r genethod. Yn yr un modd, rhaid cael gwisg addas ar gyfer gwersi chwaraeon.

Y plant hynny a ddaw â nodyn oddi wrth eu rhieni neu feddyg yn unig a esgusodir o'r gwersi hyn.

Beicio



Mae gwahoddiad i'r plant mawr i ddod a'u beics i'r ysgol – cyn belled bod helmed di-ogelwch yn cael ei gwisgo. Atgoffir chi nad yw staff yr ysgol yn gyfrifol am y beiciau nac am ddiogelwch y plant ar y ffordd yn ôl nac ymlaen i'r ysgol.

Mynd am dro



Manteisir ar gyfleoedd i fynd a'r plant am dro, weithiau heb roi rhybudd i chi fel rhieni. Efallai bydd rhywbeth wedi codi yn y dosbarth neu am fod y tywydd yn caniatáu.

Fe fydd neges testun yn cael ei yrru os y bydd bwriad i fynd a'r plant oddi ar dir yr ysgol.

Teganau



Ni ddylai'r plant ddod â theganau nac eiddo gwerthfawr, arian poced a.y.y.b. i'r ysgol gan nad oes gennym adnoddau i'w gwarchod ac na allwn fod yn gyfrifol mewn unrhyw ffordd pe cânt eu malu neu eu colli. Ni chaiff plant ddod â ffonau symudol i'r ysgol.

Cerbydau ar dir yr ysgol



Disgwylir i rieni barcio eu ceir yn y maes parcio neu yn gwbl glir o fynedfa'r ysgol pan ddanfonant eu plant yn y bore neu wrth eu nôl ar ddiwedd y prynhawn. Ni ddylid dod a cheir i faes parcio'r staff ar unrhyw achlysur.

Ni chaniateir rhieni a phlant gerdded trwy'r giat fawr y ceir ond, yn hytrach, defnyddio'r giât ochr i gerddwyr. Pwysleisir hyn oherwydd lechyd a Diogelwch.

Anogir rhieni i'w plant fagu annibyniaeth trwy adael iddynt gerdded eu hunain i'r ysgol o'r giât.

Anadlyddion



Asthma

Bydd angen llenwi ffurflen asthma os oes angen i unrhyw blentyn ddefnyddio anadlydd asthma yn ystod amser ysgol.

Fferins, Ffrwythau a Riech



Os yw'r plant angen rhywbeth i'w fwyta rhwng prydau anogir hwy ddod â ffrwythau yn hytrach na fferins, creision a.y.y.b.

Mae croeso i'r plant ddod a photel ddŵr i'r ysgol yn ddyddiol.

Rhaid i'r plant ddod a photel blastic eu hunain a mynd a hi adref bob dydd. Ni all yr ysgol dderbyn cyfrifoldeb am lendid y poteli hyn.



Peidiwch a defnyddio gwefanau cymdeithasol i ddweud dim am yr hyn sydd yn digwydd yn yr ysgol.

Ymweliadau Rhieni

Croesawir rhieni ymweld â'r ysgol. Pan fo rhieni yn awyddus i ddod i gael sgwrs â'r athro/athrawes yna, disgwylir iddynt drefnu amser gyda'r Pennaeth. Disgwylir ymwelwyr â'r ysgol gysylltu â'r Pennaeth yn gyntaf cyn mynd i weld athro/athrawes.



Money



Pocket Money / Valuables - It is recommended that pupils do not bring any money to school other than that which is needed for a specific purpose. In such cases, pupils are asked to give the money or other valuables to the class teacher for safe keeping. If pupils bring money to pay for a trip etc we kindly ask that it is placed in a sealed envelope with the pupils name written clearly on it.

Physical Education



The children must dress appropriately for their lessons in the hall – shorts only for the boys and shorts and T-shirts for the girls. Similarly, children must dress appropriately for sports lessons.

Only those children who bring a note from their parents or doctor will be excused from these lessons.

Bikes/Scooters



The older children are invited to bring their bicycles to school – as long as they wear a safety helmet. You are reminded that school staff are not responsible for the bikes nor for the children’s safety on the road to and from school.

Going for a walk



Advantage is taken of opportunities to take the children on a walk, sometimes without notifying you as parents, due to something having cropped up in class or because the weather permits this.

A text message will be sent beforehand noting of the intention of taking the pupils off the school campus.

Toys



Children should not bring toys or valuable belongings, pocket money, etc. to school as we do not have the resources to safeguard these and cannot be held responsible in any way should they be damaged or lost. Children are not allowed to bring mobile phones to school.

Children/ Parents Coming to and Going from School



Parents are asked to park in the main car park/layby, clear from the main gate when bringing or collecting children to/from school. No vehicles should come into the staff car park on any occasion.

Parents and pupils are expected to use the side pedestrian gate (not the main gate) to ensure everyone’s safety.

Parents are encouraged to develop the children’s independence by allowing them to walk up to the school independently from the car park gate.

Asthma Inhalers



An asthma form will have to be completed if a child needs to use an asthma inhaler during school time.

Sweets, Fruits and Drinks



If the children need something to eat between meals, they are encouraged to bring fruits rather than sweets, crisps, etc.

Children are welcome to bring a water bottle to school on a daily basis.

There are two water dispensers for the children’s use. The children must bring their own plastic bottle and take it home every day. The school cannot accept responsibility for the hygiene of these bottles.



Parents’ Visits

Do not use social media to report on anything that takes place at the school.

Parents are welcome to visit the school. When they wish to have a chat with a teacher, they are expected to arrange a time with the Headteacher. Visitors to the school are expected to contact the Headteacher in the first instance before going to see the teacher.



Staff yr Ysgol



**Mr D Hood
Pennaeth**



**Mrs C. Lee
Blwyddyn
Derbyn**



**Miss M. Jones
Blwyddyn
1**



**Mrs J. Owen
Blwyddyn
2**



**Miss G. Stuart
Blwyddyn
3**



**Mrs L. Cennydd
Blwyddyn
4/5**



**Mr D. Jones Evans
Blwyddyn
5/6**



**Mrs Alyson Walsh
Athrawes Arbennigol**



**Mrs P. Roberts
Uwch Gymhrothyddes**



**Mrs J. Owen
Cymhorthydd Cyfnod
Sylfaen ac ADY**



**Miss E. Ginnelly
Cymhorthydd Cyfnod
Sylfaen a Uwch
Gymhrothyddes**



**Miss Rh. Hughes
Cymhorthydd Cyfnod
Sylfaen a Uwch
Gymhrothyddes**



**Mrs Rhian Jones
Cymhorthydd Cyfnod
Sylfaen**



**Mrs Olwen Morgan
Ysgrifennyddes / Clerc**



**Mrs E. Rheinallt
Cymhorthydd ADY**



**Mrs C. Williams
Cymhorthydd ADY**

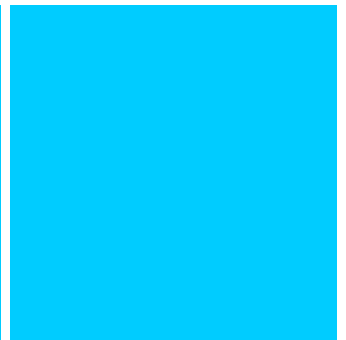
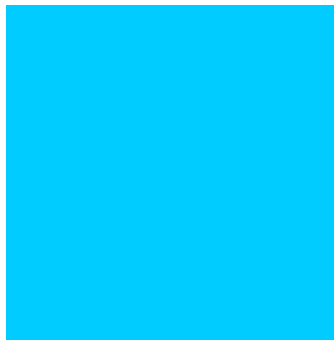
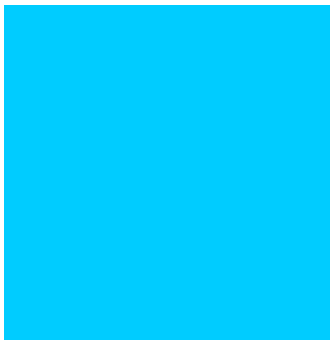
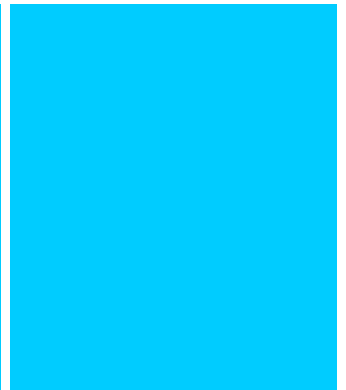
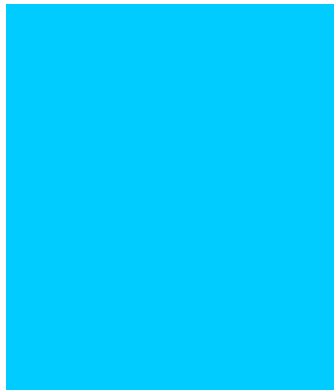
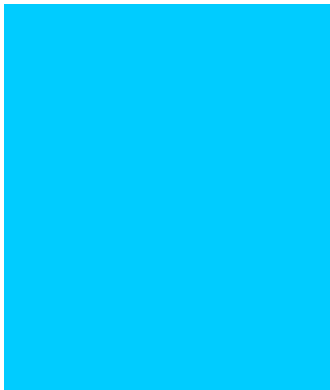
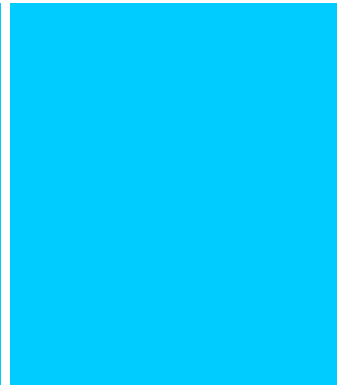
Staff yr Ysgol



Mrs Tracy Hogan
Cogyddes



Mrs Wena Hughes
Gofalwraig/Glanhawraig
Cogyddes Cynorthwyol





School Staff



Mr D Hood
Headteacher



Mrs Catherine Lee
Reception Class Teacher



Miss Manon Jones
Year 2 Teacher



Mrs Julie Owen
Year 1 Teacher



Miss Greta Stuart
Year 3 Teacher



Mrs Lisa Cennydd
Year 4/5 Teacher



Mr Dyfed Jones Evans
Year 5/6 Teacher



Mrs Alyson Walsh
Y Glannau Unit Teacher/
PPA



Mrs Patricia Roberts
1:1 Assistant / HLTA



Mrs Anwen Edwards
Foundation Phase Class
Assistant and ALN



Miss Elen Ginnelly
Foundation Phase Class
Assistant and HLTA



Miss Rhian Hughes
Foundation Phase Class
Assistant and HLTA



Mrs Rhian Jones
Foundation Phase Class
Assistant



Mrs Olwen Morgan
Secretary / Clerk



Mrs Erwain Rheinallt
ALN Assistant



Mrs C. Williams
ALN Assistant

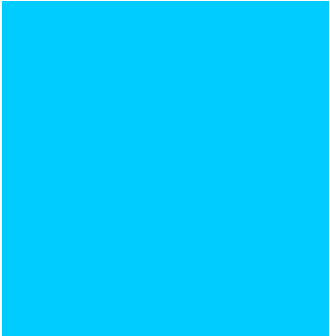
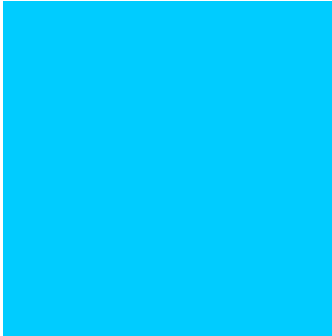
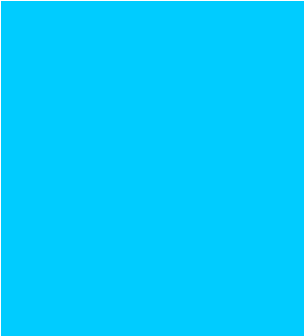
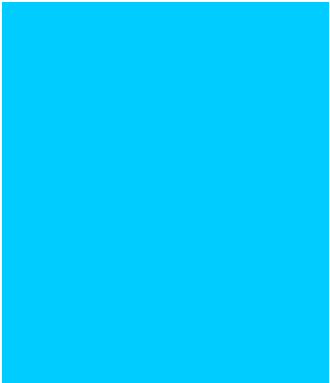
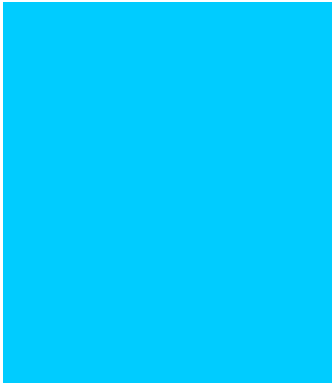
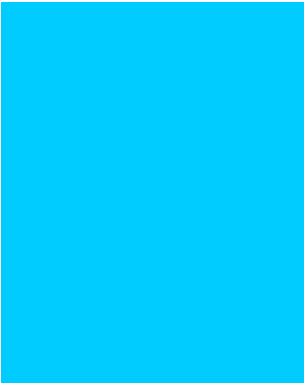
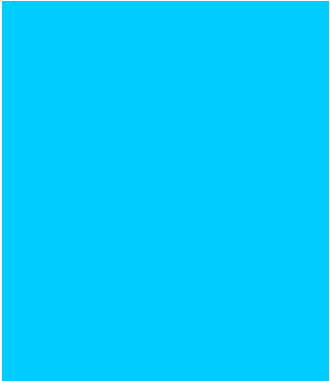
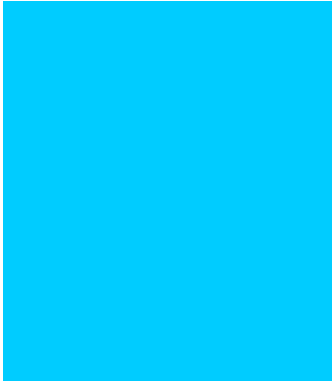
School Staff



Mrs Tracy Hogan
Cook in Charge



Mrs Wena Hughes
Caretaker / Cleaner
Assiatnt Cook



Y CORFF LLYWODRAETHU



Enw/Name	Cynrychiolaeth/ Representing	Diwedd term
Cyng CJones	Awdurdod / Authority	Awst 2019
Mrs Mckeaveney	Rhieni / Parents	Awst 2019
Mrs Eaton	Rhieni / Parents	Awst 2019
Mrs Patrick	Rhieni/ Parents	Awst 2019
Mrs. Hughes	Rhieni / Parents	Awst 2019
Mrs Ruth Edwards	Awdurdod Lleol Local Authority	Awst 2019
Mrs C. Lee	Staff	Awst 2019
Mrs P Roberts	Staff Ategol/ Support Staff	Awst 2019
Mr D Hood	Pennaeth/Headteacher	Rhinwedd ei swydd
Mrs J. Williams	Clerc/Clerk	Rhinwedd ei swydd

THE GOVERNING BODY



Enw/Name	Cynrychiolaeth/ Representing	Diwedd term
Cyng C Jones	Awdurdod / Authority	Awst 2019
Mrs McKeaveney	Rhieni / Parents	Awst 2019
Mrs Eaton	Rhieni / Parents	Awst 2019
Mrs Patrick	Rhieni/ Parents	Awst 2019
Mrs. Hughes	Rhieni / Parents	Awst 2019
Mrs R Edwards	Awdurdod Lleol Local Authority	Awst 2019
Mrs C. Lee	Staff	Awst 2019
Mrs P Roberts	Staff Ategol/ Support Staff	Awst 2019
Mr D Hood	Pennaeth/Headteacher	Rhinwedd ei swydd
Mrs J. Williams	Clerc/Clerk	Rhinwedd ei swydd



ROL LLYWODRAETHWYR YR YSGOL

Mae rôl y llywodraethwyr yn hanfodol i ddatblygiad yr ysgol, ac yn cynorthwyo drwy eistedd fel bwrdd ymgynghorol a chyfarwyddol, Gwnant benderfyniadau yngly^n â sut mae'r ysgol yn cael ei gweithredu. Bydd y corff llawn yn cyfarfod o leiaf un waith bob tymor, a cheir cyfarfodydd rheolaidd o'r is bwyllgorau i drafod agweddau staffio, cyllid, addysg arbennig, cwricwlwm ac adeiladau.

Mae llywodraethwyr yn cael eu penodi i gynorthwyo :-

1. I benderfynu beth sydd yn cael ei ddysgu a fod disgyblion yn derbyn addysg o'r ansawdd uchaf
2. I safoni ymddygiad y plant.
3. I gyfweled a phenodi staff.
4. I benderfynu sut mae gwario'r gyllideb.

Mae llywodraethwyr yn :-

1. Rhieni
2. Athrawon a staff ategol yn yr ysgol.
3. Cynrychiolwyr cynghorau lleol.
4. Cynrychiolwyr y gwasanaethau masnachol.

Mae rhiant-llywodraethwr :-

1. Gyda phlentyn yn yr ysgol.
2. Yn cael ei ethol/hethol gan rieni'r ysgol.
3. Yn gwasanaethu fel bob llywodraethwr arall am gyfnod o 4 blynedd.

Mae Rhiant - Llywodraethwr yn allweddol ar gyfer dod â barn rhieni i'r corff cyfan, ond **gallant drafod fel unigolion. Mae ganddynt statws cyfartal a'r hawl i fwrw pleidlais.** Byddwch chi fel rhieni yn ethol 3 Rhiant - Llywodraethwr am gyfnod o 4 blynedd.



SCHOOL GOVERNORS

The governors have a crucial role in the school's development, and assist through sitting as an advisory and guiding board. They make decisions regarding how the school is run. The full body meet at least once every term, and regular sub-committee meetings are held to discuss aspects of staffing, finance, special education, curriculum and buildings.

Governors are appointed to assist :-

1. To decide on what is taught
2. To ensure that children are all well- behaved.
3. To interview and appoint staff.
4. To decide how to spend the budget.

Governors consist of :-

1. Parents
2. Teachers and support staff at the school.
3. Representatives from local councils.
4. Commercial services representatives.

A parent-governor :-

1. Has a child at the school.
2. Is elected by parents of pupils.
3. Serves as every other governor for a 4 year period.

A Parent-Governor has a key role in voicing parents opinion to the entire body, - **but can discuss as individuals. They have equal status and the entitlement to cast a vote.** Parents will elect 3 Parent Governors for a period of 4 years.



GWYLIAU YSGOL 2018-2019

TYMOR:

Hydref 2018 3 Medi 2018 - 21 Rhagfyr 2018
Gwanwyn 2019 7 Ionawr 2019 - 12 Ebrill 2019
Hâf 2019 29 Ebrill 2019 - 22 Gorffennaf 2019

Ysgolion yn agor i blant ar Ddydd Mawrth 4 Medi 2018.

GWYLIAU:

29 Hydref – 2 Tachwedd 2018 (Hanner-Tymor)
24 Rhagfyr 2018 - 4 Ionawr 2019 (Gwyliau'r Nadolig)
25 Chwefror 2019 – 1 Mawrth 2019 (Hanner-Tymor)
15 – 26 Ebrill 2019 (Gwyliau'r Pasg)
6 Mai 2019 (Calan Mai)
27 - 31 Mai 2019 (Hanner-Tymor)

Ysgol yn cau i blant am wyliau Haf ar Ddydd Gwener, 19 Gorffennaf 2019.

Nid yw dyddiadau Blwyddyn Ysgol 2019 – 2020 wedi eu cadarnhau hyd yma.

Nifer o ddyddiau ymhob mis y bydd yr ysgolion ar agor:

MEDI 2018	20
HYDREF 2018	20
TACHWEDD 2018	20
RHAGFYR 2018	15
IONAWR 2019	19
CHWEFROR 2019	16
MAWRTH 2019	20
EBRILL 2019	12
MAI 2019	17
MEHEFIN 2019	20
GORFFENNAF 2019	16

	195

3 Medi 2018 - Diwrnod dan Reolaeth Ysgol
22 Gorffennaf 2019 - Diwrnod dan Reolaeth Ysgol
3 diwrnod hyfforddiant i'w trefnu gan yr ysgol yn ystod y flwyddyn

Daw hyn a'r nifer dyddiau ysgol i ddisgyblion i 190

Bydd ysgolion sy'n cau ar gyfer etholiadau, yn agor am y nifer hynny o ddyddiau ar ddi-wedd Tymor yn Haf.



SCHOOL HOLIDAYS 2018-2019

TERM:

Autumn 2018 3 September 2018 - 21 December 2018

Spring 2019 7 January 2019 - 12 April 2019

Summer 2019 29 April 2019 - 22 July 2019

Schools opening for pupils on Tuesday, 4 September, 2018.

HOLIDAYS:

29 October – 2 November 2018 (Half Term)

24 December 2018 - 4 January 2019 (Christmas Holidays)

25 February 2019 – 1 March 2019 (Half Term)

15 – 26 April 2019 (Easter Holidays)

6 May 2019 (May Day)

27 - 31 May 2019 (Half Term)

Schools close for pupils for the Summer holidays on Friday, 19 July, 2019.

The dates for the 2019 - 2020 school year have not been finalised as yet.

Number of days on which schools will be open every month :

SEPTEMBER 2018	20
OCTOBER 2018	20
NOVEMBER 2018	20
DECEMBER 2018	15
JANUARY 2019	19
FEBRUARY 2019	16
MARCH 2019	20
APRIL 2019	12
MAY 2019	17
JUNE 2019	20
JULY 2019	16

	195

3 September 2018 – School Management Day

22 July 2019 - School Management Day

3 Inset Days to be arranged by the school during the year

The number of days on which schools will be open to pupils is 190

Schools which close for elections to be held, will open for the equivalent number of days at the end of the Summer Term.